

DATASHEET

DNA Polymerase delta 4 Rabbit Polyclonal Antibody

CAT. NO. APA14787

KEY FEATURES

Target	DNA Polymerase delta 4	Source / Host	Rabbit
Reactivity	Human, Mouse, Rat	Clonality	Polyclonal
Applications	WB	Conjugation	Unconjugated
Form / Buffer	Liquid in 0.42% Potassium phosphate, 0.87% Sodium chloride, pH 7.3, 30% glycerol, and 0.01% sodium azide.		Storage at-20°C

BACKGROUND

As a component of the tetrameric DNA polymerase delta complex (Pol-delta4), plays a role in high fidelity genome replication and repair. Within this complex, increases the rate of DNA synthesis and decreases fidelity by regulating POLD1 polymerase and proofreading 3' to 5' exonuclease activity , plays a role in high fidelity genome replication and repair. Within this complex, increases the rate of DNA synthesis and decreases fidelity by regulating POLD1 polymerase and proofreading 3' to 5' exonuclease activity . Pol-delta4 participates in Okazaki fragment processing, through both the short flap pathway, as well as a nick translation system .

APPLICATION

To ensure optimal assay performance, AREX recommends conducting reagent titration tailored to each testing system for optimal detection results.

WB	1:500 - 1:2000
----	----------------

*Results are sample-specific. Please refer to your local assay conditions and test parameters for reference.

PRODUCT OVERVIEW

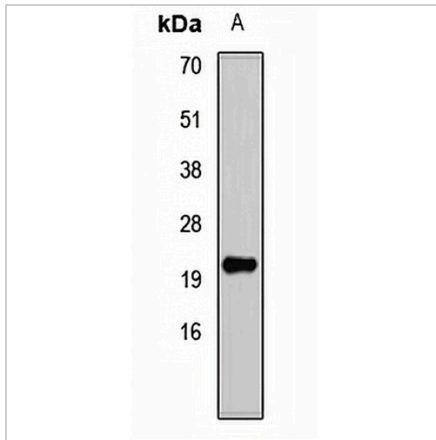
Description	Rabbit polyclonal antibody to DNA Polymerase delta 4
Specificity	Recognizes endogenous levels of DNA Polymerase delta 4 protein.
Antibody Type	Primary antibody
Immunogen	Recombinant fusion protein of human DNA Polymerase delta 4
Purification	The antibody was purified by immunogen affinity chromatography.
Molecular Weight	Predicted: 8; Observed: 20 kD
Form/Buffer	Liquid in 0.42% Potassium phosphate, 0.87% Sodium chloride, pH 7.3, 30% glycerol, and 0.01% sodium azide.
Alternative Names	POLDS; DNA polymerase delta subunit 4; DNA polymerase delta subunit p12
Gene Symbol	POLD4
Entrez Gene	57804(Human); 69745(Mouse)
SwissProt	Q9HCU8(Human); Q9CWP8(Mouse)

*AREX continuously optimizes our products. Webpage content may not reflect the latest updates. For inquiries, please contact info@arexbio.com or your local distributor.

*Clone Number, Reactivity, Source/Host and Clonality can be found in the product name and Key Features section above.

DATASHEET**DNA Polymerase delta 4 Rabbit Polyclonal Antibody**

CAT. NO. APA14787

DATA

Western blot analysis of DNA Polymerase delta 4 expression in MCF7 (A) whole cell lysates. (Predicted band size: 8; 12 kD; Observed band size: 20 kD)

STORAGE

Store at 4°C short term. For long term storage, store at -20°C, avoiding freeze/thaw cycles.

NOTE

For Research Use Only. Not for diagnostic, therapeutics, prophylactic or in vivo use.