

DATASHEET

NAA25 Rabbit Polyclonal Antibody

CAT. NO. APA14790

KEY FEATURES

Target	NAA25	Source / Host	Rabbit
Reactivity	Human, Mouse, Rat	Clonality	Polyclonal
Applications	WB	Conjugation	Unconjugated
Form / Buffer	Liquid in 0.42% Potassium phosphate, 0.87% Sodium chloride, pH 7.3, 30% glycerol, and 0.01% sodium azide.		Storage at -20°C

BACKGROUND

Non-catalytic subunit of the NatB complex which catalyzes acetylation of the N-terminal methionine residues of peptides beginning with Met-Asp, Met-Glu, Met-Asn and Met-Gln. May play a role in normal cell-cycle progression.

APPLICATION

To ensure optimal assay performance, AREX recommends conducting reagent titration tailored to each testing system for optimal detection results.

WB	1:500 - 1:2000
----	----------------

*Results are sample-specific. Please refer to your local assay conditions and test parameters for reference.

PRODUCT OVERVIEW

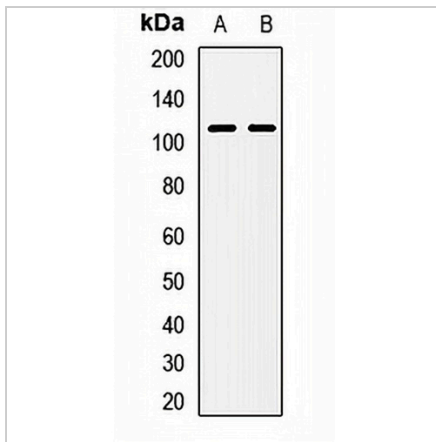
Description	Rabbit polyclonal antibody to NAA25
Specificity	Recognizes endogenous levels of NAA25 protein.
Antibody Type	Primary antibody
Immunogen	Recombinant fusion protein of human NAA25
Purification	The antibody was purified by immunogen affinity chromatography.
Molecular Weight	Predicted: 99; Observed: 120 kD
Form/Buffer	Liquid in 0.42% Potassium phosphate, 0.87% Sodium chloride, pH 7.3, 30% glycerol, and 0.01% sodium azide.
Alternative Names	C12orf30; MDM20; NAP1; N-alpha-acetyltransferase 25, NatB auxiliary subunit; Mitochondrial distribution and morphology protein 20; N-terminal acetyltransferase B complex subunit MDM20; NatB complex subunit MDM20; N-terminal acetyltransferase B complex subunit NAA25; p120
Gene Symbol	NAA25
Entrez Gene	80018(Human); 231713(Mouse); 360811(Rat)
SwissProt	Q14CX7(Human); Q8BWZ3(Mouse); Q6QI44(Rat)

*AREX continuously optimizes our products. Webpage content may not reflect the latest updates. For inquiries, please contact info@arexbio.com or your local distributor.

*Clone Number, Reactivity, Source/Host and Clonality can be found in the product name and Key Features section above.

DATASHEET**NAA25 Rabbit Polyclonal Antibody**

CAT. NO. APA14790

DATA

Western blot analysis of NAA25 expression in mouse ovary (A), rat ovary (B) whole cell lysates. (Predicted band size: 99; 112 kD; Observed band size: 120 kD)

STORAGE

Store at 4°C short term. For long term storage, store at -20°C, avoiding freeze/thaw cycles.

NOTE

For Research Use Only. Not for diagnostic, therapeutics, prophylactic or in vivo use.