

DATASHEET

MTERFD3 Rabbit Polyclonal Antibody

CAT. NO. APA14792

KEY FEATURES

Target	MTERFD3	Source / Host	Rabbit
Reactivity	Human, Mouse, Rat	Clonality	Polyclonal
Applications	WB	Conjugation	Unconjugated
Form / Buffer	Liquid in 0.42% Potassium phosphate, 0.87% Sodium chloride, pH 7.3, 30% glycerol, and 0.01% sodium azide.		Storage at -20°C

BACKGROUND

Binds mitochondrial DNA and plays a role in the regulation of transcription of mitochondrial mRNA and rRNA species.

APPLICATION

To ensure optimal assay performance, AREX recommends conducting reagent titration tailored to each testing system for optimal detection results.

WB	1:500 - 1:1000
----	----------------

*Results are sample-specific. Please refer to your local assay conditions and test parameters for reference.

PRODUCT OVERVIEW

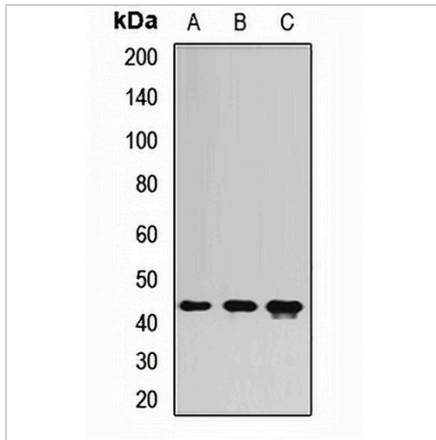
Description	Rabbit polyclonal antibody to MTERFD3
Specificity	Recognizes endogenous levels of MTERFD3 protein.
Antibody Type	Primary antibody
Immunogen	Recombinant fusion protein of human MTERFD3
Purification	The antibody was purified by immunogen affinity chromatography.
Molecular Weight	Predicted: 44 kD; Observed: 44 kD
Form/Buffer	Liquid in 0.42% Potassium phosphate, 0.87% Sodium chloride, pH 7.3, 30% glycerol, and 0.01% sodium azide.
Alternative Names	mTERF domain-containing protein 3 mitochondrial; Mitochondrial transcription termination factor 2; mTERF2; mTERFL; Mitochondrial transcription termination factor-like protein
Gene Symbol	MTERFD3
Entrez Gene	80298(Human); 74238(Mouse); 366856(Rat)
SwissProt	Q49AM1(Human); Q8BKY8(Mouse); Q5XIE2(Rat)

*AREX continuously optimizes our products. Webpage content may not reflect the latest updates. For inquiries, please contact info@arexbio.com or your local distributor.

*Clone Number, Reactivity, Source/Host and Clonality can be found in the product name and Key Features section above.

DATASHEET**MTERFD3 Rabbit Polyclonal Antibody**

CAT. NO. APA14792

DATA

Western blot analysis of MTERFD3 expression in HepG2 (A), mouse liver (B), rat heart (C) whole cell lysates. (Predicted band size: 44 kD; Observed band size: 44 kD)

STORAGE

Store at 4°C short term. For long term storage, store at -20°C, avoiding freeze/thaw cycles.

NOTE

For Research Use Only. Not for diagnostic, therapeutics, prophylactic or in vivo use.