

DATASHEET

CALCRL Rabbit Polyclonal Antibody

CAT. NO. APA14798

KEY FEATURES

| | | | |
|---------------|---|---------------|---------------------|
| Target | CALCRL | Source / Host | Rabbit |
| Reactivity | Human, Mouse, Rat | Clonality | Polyclonal |
| Applications | WB | Conjugation | Unconjugated |
| Form / Buffer | Liquid in 0.42% Potassium phosphate, 0.87% Sodium chloride, pH 7.3, 30% glycerol, and 0.01% sodium azide. | | Storage at -20°C |

BACKGROUND

G protein-coupled receptor which specificity is determined by its interaction with receptor-activity-modifying proteins (RAMPs) . Together with RAMP1, form the receptor complex for calcitonin-gene-related peptides CALCA/CGRP1 and CALCB/CGRP2 . Together with RAMP2 or RAMP3, function as receptor complexes for adrenomedullin (ADM and ADM2) . Ligand binding causes a conformation change that triggers signaling via guanine nucleotide-binding proteins (G proteins) and modulates the activity of downstream effectors. Activates cAMP-dependent pathway .

APPLICATION

To ensure optimal assay performance, AREX recommends conducting reagent titration tailored to each testing system for optimal detection results.

| | |
|----|----------------|
| WB | 1:500 - 1:2000 |
|----|----------------|

*Results are sample-specific. Please refer to your local assay conditions and test parameters for reference.

PRODUCT OVERVIEW

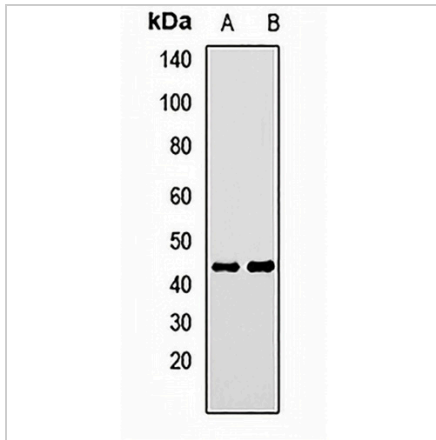
| | |
|-------------------|---|
| Description | Rabbit polyclonal antibody to CALCRL |
| Specificity | Recognizes endogenous levels of CALCRL protein. |
| Antibody Type | Primary antibody |
| Immunogen | Recombinant fusion protein of human CALCRL |
| Purification | The antibody was purified by immunogen affinity chromatography. |
| Molecular Weight | Predicted: 52 kD; Observed: 43 kD |
| Form/Buffer | Liquid in 0.42% Potassium phosphate, 0.87% Sodium chloride, pH 7.3, 30% glycerol, and 0.01% sodium azide. |
| Alternative Names | CGRPR; Calcitonin gene-related peptide type 1 receptor; CGRP type 1 receptor; Calcitonin receptor-like receptor |
| Gene Symbol | CALCRL |
| Entrez Gene | 10203(Human); 54598(Mouse) |
| SwissProt | Q16602(Human); Q9R1W5(Mouse) |

*AREX continuously optimizes our products. Webpage content may not reflect the latest updates. For inquiries, please contact info@arexbio.com or your local distributor.

*Clone Number, Reactivity, Source/Host and Clonality can be found in the product name and Key Features section above.

DATASHEET**CALCRL Rabbit Polyclonal Antibody**

CAT. NO. APA14798

DATA

Western blot analysis of CALCRL expression in U251 (A), mouse heart (B) whole cell lysates. (Predicted band size: 52 kD; Observed band size: 43 kD)

STORAGE

Store at 4°C short term. For long term storage, store at -20°C, avoiding freeze/thaw cycles.

NOTE

For Research Use Only. Not for diagnostic, therapeutics, prophylactic or in vivo use.