

DATASHEET

Aquaporin 9 Rabbit Polyclonal Antibody

CAT. NO. APA14800

KEY FEATURES

Target	Aquaporin 9	Source / Host	Rabbit
Reactivity	Human, Mouse, Rat	Clonality	Polyclonal
Applications	WB	Conjugation	Unconjugated
Form / Buffer	Liquid in 0.42% Potassium phosphate, 0.87% Sodium chloride, pH 7.3, 30% glycerol, and 0.01% sodium azide.		Storage at -20°C

BACKGROUND

Aquaglyceroporins form homotetrameric transmembrane channels, with each monomer independently mediating glycerol and water transport across the plasma membrane along their osmotic gradient. AQP9 is the primary route for glycerol uptake in hepatocytes, supporting hepatic gluconeogenesis. It exhibits broad specificity and may transport various small, non-charged solutes, including carbamides, polyols, purines, and pyrimidines. AQP9 may also facilitate hepatic urea extrusion. Due to its permeability to lactate, AQP9 might participate in the astrocyte-to-neuron lactate shuttle, supplying neurons with energy. Additionally, AQP9 is permeable to arsenite, contributing to arsenic excretion by the liver and providing partial protection against arsenic toxicity.

APPLICATION

To ensure optimal assay performance, AREX recommends conducting reagent titration tailored to each testing system for optimal detection results.

WB	1:500 - 1:2000
----	----------------

*Results are sample-specific. Please refer to your local assay conditions and test parameters for reference.

PRODUCT OVERVIEW

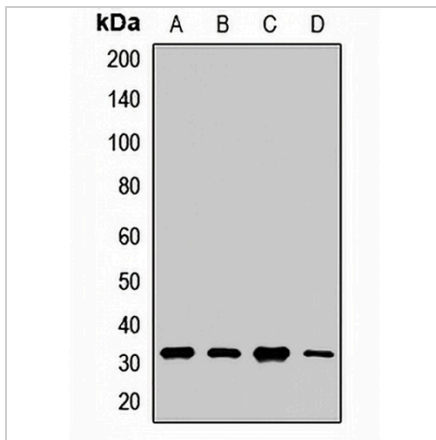
Description	Rabbit polyclonal antibody to Aquaporin 9
Specificity	Recognizes endogenous levels of Aquaporin 9 protein.
Antibody Type	Primary antibody
Immunogen	KLH-conjugated synthetic peptide of human Aquaporin 9
Purification	The antibody was purified by immunogen affinity chromatography.
Molecular Weight	Predicted: 31 kD; Observed: 32; 37-43 kD
Form/Buffer	Liquid in 0.42% Potassium phosphate, 0.87% Sodium chloride, pH 7.3, 30% glycerol, and 0.01% sodium azide.
Alternative Names	SSC1; Aquaporin-9; AQP-9; Aquaglyceroporin-9; Small solute channel 1
Gene Symbol	AQP9
Entrez Gene	366(Human); 64008(Mouse); 65054(Rat)
SwissProt	O43315(Human); Q9JJJ3(Mouse); P56627(Rat)

*AREX continuously optimizes our products. Webpage content may not reflect the latest updates. For inquiries, please contact info@arexbio.com or your local distributor.

*Clone Number, Reactivity, Source/Host and Clonality can be found in the product name and Key Features section above.

DATASHEET**Aquaporin 9 Rabbit Polyclonal Antibody**

CAT. NO. APA14800

DATA

Western blot analysis of Aquaporin 9 expression in HepG2 (A), A549 (B), PC12 (C), mouse lung (D) whole cell lysates. (Predicted band size: 31 kD; Observed band size: 32; 37-43 kD)

STORAGE

Store at 4°C short term. For long term storage, store at -20°C, avoiding freeze/thaw cycles.

NOTE

For Research Use Only. Not for diagnostic, therapeutics, prophylactic or in vivo use.