

DATASHEET

Gephyrin Rabbit Polyclonal Antibody

CAT. NO. APA14812

KEY FEATURES

Target	Gephyrin	Source / Host	Rabbit
Reactivity	Human, Mouse, Rat	Clonality	Polyclonal
Applications	WB	Conjugation	Unconjugated
Form / Buffer	Liquid in 0.42% Potassium phosphate, 0.87% Sodium chloride, pH 7.3, 30% glycerol, and 0.01% sodium azide.		Storage at-20°C

BACKGROUND

Microtubule-associated protein involved in membrane protein-cytoskeleton interactions. It is thought to anchor the inhibitory glycine receptor (GLYR) to subsynaptic microtubules . Acts as a major instructive molecule at inhibitory synapses, where it also clusters GABA type A receptors to subsynaptic microtubules . Acts as a major instructive molecule at inhibitory synapses, where it also clusters GABA type A receptors .

APPLICATION

To ensure optimal assay performance, AREX recommends conducting reagent titration tailored to each testing system for optimal detection results.

WB	1:500 - 1:1000
----	----------------

*Results are sample-specific. Please refer to your local assay conditions and test parameters for reference.

PRODUCT OVERVIEW

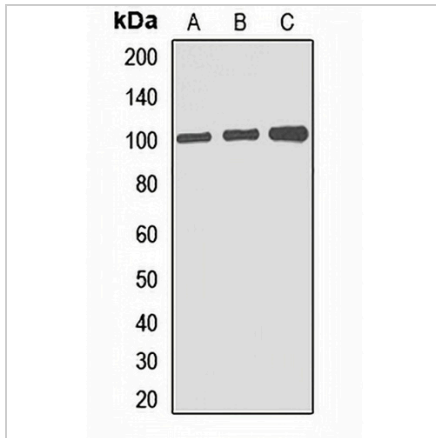
Description	Rabbit polyclonal antibody to Gephyrin
Specificity	Recognizes endogenous levels of Gephyrin protein.
Antibody Type	Primary antibody
Immunogen	Recombinant fusion protein of human Gephyrin
Purification	The antibody was purified by immunogen affinity chromatography.
Molecular Weight	Predicted: 79; Observed: 103 kD
Form/Buffer	Liquid in 0.42% Potassium phosphate, 0.87% Sodium chloride, pH 7.3, 30% glycerol, and 0.01% sodium azide.
Alternative Names	GPH; KIAA1385; Gephyrin
Gene Symbol	GPHN
Entrez Gene	10243(Human); 268566(Mouse); 64845(Rat)
SwissProt	Q9NQX3(Human); Q8BUV3(Mouse); Q03555(Rat)

*AREX continuously optimizes our products. Webpage content may not reflect the latest updates. For inquiries, please contact info@arexbio.com or your local distributor.

*Clone Number, Reactivity, Source/Host and Clonality can be found in the product name and Key Features section above.

DATASHEET**Gephyrin Rabbit Polyclonal Antibody**

CAT. NO. APA14812

DATA

Western blot analysis of Gephyrin expression in HEK293T (A), mouse liver (B), rat brain (C) whole cell lysates. (Predicted band size: 79; 83 kD; Observed band size: 103 kD)

STORAGE

Store at 4°C short term. For long term storage, store at -20°C, avoiding freeze/thaw cycles.

NOTE

For Research Use Only. Not for diagnostic, therapeutics, prophylactic or in vivo use.