

**DATASHEET**

**Cytochrome P450 46A1 Rabbit Polyclonal Antibody**

CAT. NO. APA14813

**KEY FEATURES**

Target	Cytochrome P450 46A1	Source / Host	Rabbit
Reactivity	Human, Mouse, Rat	Clonality	Polyclonal
Applications	WB, IHC, IF/ICC	Conjugation	Unconjugated
Form / Buffer	Liquid in 0.42% Potassium phosphate, 0.87% Sodium chloride, pH 7.3, 30% glycerol, and 0.01% sodium azide.	Storage	at-20°C

**BACKGROUND**

P450 monooxygenase that plays a major role in cholesterol homeostasis in the brain. Primarily catalyzes the hydroxylation (with S stereochemistry) at C-24 of cholesterol side chain, triggering cholesterol diffusion out of neurons and its further degradation at C-24 of cholesterol side chain, triggering cholesterol diffusion out of neurons and its further degradation . By promoting constant cholesterol elimination in neurons, may activate the mevalonate pathway and coordinate the synthesis of new cholesterol and nonsterol isoprenoids involved in synaptic activity and learning . Further hydroxylates cholesterol derivatives and hormone steroids on both the ring and side chain of these molecules, converting them into active oxysterols involved in lipid signaling and biosynthesis .

**APPLICATION**

To ensure optimal assay performance, AREX recommends conducting reagent titration tailored to each testing system for optimal detection results.

WB	1:500 - 1:2000
IHC	1:50 - 1:200
IF/ICC	1:50 - 1:200

\*Results are sample-specific. Please refer to your local assay conditions and test parameters for reference.

**PRODUCT OVERVIEW**

Description	Rabbit polyclonal antibody to Cytochrome P450 46A1
Specificity	Recognizes endogenous levels of Cytochrome P450 46A1 protein.
Antibody Type	Primary antibody
Immunogen	Recombinant fusion protein of human Cytochrome P450 46A1
Purification	The antibody was purified by immunogen affinity chromatography.
Molecular Weight	Predicted: 38; Observed: 57 kD
Form/Buffer	Liquid in 0.42% Potassium phosphate, 0.87% Sodium chloride, pH 7.3, 30% glycerol, and 0.01% sodium azide.
Alternative Names	CYP46; Cholesterol 24-hydroxylase; CH24H; Cytochrome P450 46A1
Gene Symbol	CYP46A1
Entrez Gene	10858(Human); 13116(Mouse)
SwissProt	Q9Y6A2(Human); Q9WVK8(Mouse)

\*AREX continuously optimizes our products. Webpage content may not reflect the latest updates. For inquiries, please contact [info@arexbio.com](mailto:info@arexbio.com) or your local distributor.

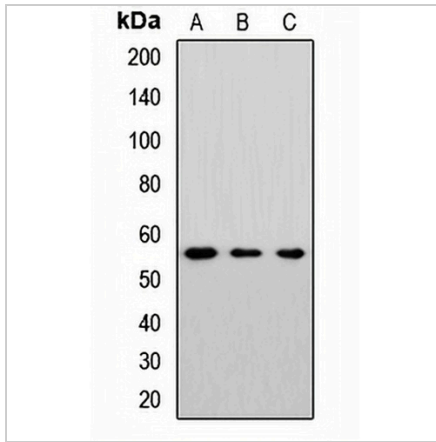
\*Clone Number, Reactivity, Source/Host and Clonality can be found in the product name and Key Features section above.

**DATASHEET**

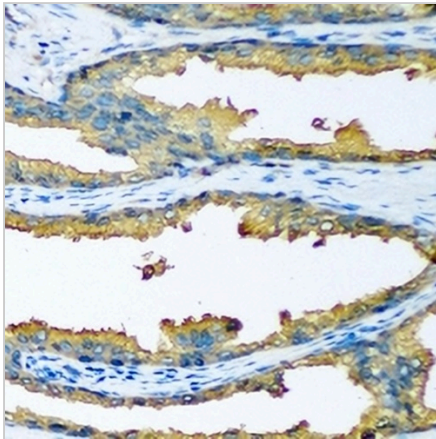
**Cytochrome P450 46A1 Rabbit Polyclonal Antibody**

CAT. NO. APA14813

**DATA**



Western blot analysis of Cytochrome P450 46A1 expression in MCF7 (A), mouse brain (B), rat liver (C) whole cell lysates. (Predicted band size: 38; 45; 56 kD; Observed band size: 57 kD)



Immunohistochemical analysis of Cytochrome P450 46A1 staining in human prostate cancer formalin fixed paraffin embedded tissue section. The section was pre-treated using heat mediated antigen retrieval with sodium citrate buffer (pH 6.0). The section was then incubated with the antibody at room temperature and detected using an HRP conjugated compact polymer system. DAB was used as the chromogen. The section was then counterstained with haematoxylin and mounted with DPX.

**STORAGE**

Store at 4°C short term. For long term storage, store at -20°C, avoiding freeze/thaw cycles.

**NOTE**

For Research Use Only. Not for diagnostic, therapeutics, prophylactic or in vivo use.