

DATASHEET

MEMO1 Rabbit Polyclonal Antibody

CAT. NO. APA14816

KEY FEATURES

Target	MEMO1	Source / Host	Rabbit
Reactivity	Human, Mouse, Rat	Clonality	Polyclonal
Applications	WB, IHC	Conjugation	Unconjugated
Form / Buffer	Liquid in 0.42% Potassium phosphate, 0.87% Sodium chloride, pH 7.3, 30% glycerol, and 0.01% sodium azide.		Storage at-20°C

BACKGROUND

May control cell migration by relaying extracellular chemotactic signals to the microtubule cytoskeleton. Mediator of ERBB2 signaling. The MEMO1-RHOA-DIAPH1 signaling pathway plays an important role in ERBB2-dependent stabilization of microtubules at the cell cortex. It controls the localization of APC and CLASP2 to the cell membrane, via the regulation of GSK3B activity. In turn, membrane-bound APC allows the localization of the MACF1 to the cell membrane, which is required for microtubule capture and stabilization. Is required for breast carcinoma cell migration.

APPLICATION

To ensure optimal assay performance, AREX recommends conducting reagent titration tailored to each testing system for optimal detection results.

WB	1:500 - 1:2000
IHC	1:50 - 1:200

*Results are sample-specific. Please refer to your local assay conditions and test parameters for reference.

PRODUCT OVERVIEW

Description	Rabbit polyclonal antibody to MEMO1
Specificity	Recognizes endogenous levels of MEMO1 protein.
Antibody Type	Primary antibody
Immunogen	Recombinant fusion protein of human MEMO1
Purification	The antibody was purified by immunogen affinity chromatography.
Molecular Weight	Predicted: 31; Observed: 32 kD
Form/Buffer	Liquid in 0.42% Potassium phosphate, 0.87% Sodium chloride, pH 7.3, 30% glycerol, and 0.01% sodium azide.
Alternative Names	C2orf4; MEMO; NS5ATP7; Protein MEMO1; C21orf19-like protein; Hepatitis C virus NS5A-transactivated protein 7; HCV NS5A-transactivated protein 7; Mediator of ErbB2-driven cell motility 1; Mediator of cell motility 1; Memo-1
Gene Symbol	MEMO1
Entrez Gene	51072(Human); 76890(Mouse); 298787(Rat)
SwissProt	Q9Y316(Human); Q91VH6(Mouse); Q4QQR9(Rat)

*AREX continuously optimizes our products. Webpage content may not reflect the latest updates. For inquiries, please contact info@arexbio.com or your local distributor.

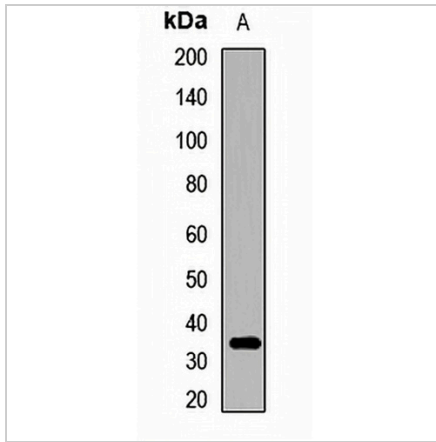
*Clone Number, Reactivity, Source/Host and Clonality can be found in the product name and Key Features section above.

DATASHEET

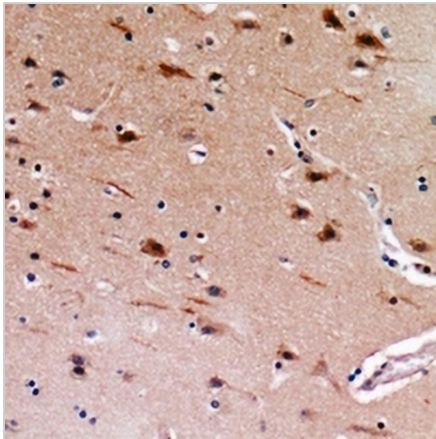
MEMO1 Rabbit Polyclonal Antibody

CAT. NO. APA14816

DATA



Western blot analysis of MEMO1 expression in mouse heart (A) whole cell lysates. (Predicted band size: 31; 33; 34 kD; Observed band size: 32 kD)



Immunohistochemical analysis of MEMO1 staining in human brain formalin fixed paraffin embedded tissue section. The section was pre-treated using heat mediated antigen retrieval with sodium citrate buffer (pH 6.0). The section was then incubated with the antibody at room temperature and detected using an HRP conjugated compact polymer system. DAB was used as the chromogen. The section was then counterstained with haematoxylin and mounted with DPX.

STORAGE

Store at 4°C short term. For long term storage, store at -20°C, avoiding freeze/thaw cycles.

NOTE

For Research Use Only. Not for diagnostic, therapeutics, prophylactic or in vivo use.