

DATASHEET

CHCHD3 Rabbit Polyclonal Antibody

CAT. NO. APA14817

KEY FEATURES

Target	CHCHD3	Source / Host	Rabbit
Reactivity	Human, Mouse	Clonality	Polyclonal
Applications	WB, IF/ICC, IP	Conjugation	Unconjugated
Form / Buffer	Liquid in 0.42% Potassium phosphate, 0.87% Sodium chloride, pH 7.3, 30% glycerol, and 0.01% sodium azide.		Storage at-20°C

BACKGROUND

Component of the MICOS complex, a large protein complex of the mitochondrial inner membrane that plays crucial roles in the maintenance of crista junctions, inner membrane architecture, and formation of contact sites to the outer membrane . Plays an important role in the maintenance of the MICOS complex stability and the mitochondrial cristae morphology . Has also been shown to function as a transcription factor which binds to the BAG1 promoter and represses BAG1 transcription .

APPLICATION

To ensure optimal assay performance, AREX recommends conducting reagent titration tailored to each testing system for optimal detection results.

WB	1:500 - 1:1000
IF/ICC	1:50 - 1:200
IP	1:10 - 1:50

*Results are sample-specific. Please refer to your local assay conditions and test parameters for reference.

PRODUCT OVERVIEW

Description	Rabbit polyclonal antibody to CHCHD3
Specificity	Recognizes endogenous levels of CHCHD3 protein.
Antibody Type	Primary antibody
Immunogen	Recombinant fusion protein of human CHCHD3
Purification	The antibody was purified by immunogen affinity chromatography.
Molecular Weight	Predicted: 26 kD; Observed: 30 kD
Form/Buffer	Liquid in 0.42% Potassium phosphate, 0.87% Sodium chloride, pH 7.3, 30% glycerol, and 0.01% sodium azide.
Alternative Names	MINOS3; Coiled-coil-helix-coiled-coil-helix domain-containing protein 3 mitochondrial
Gene Symbol	CHCHD3
Entrez Gene	54927(Human); 66075(Mouse)
SwissProt	Q9NX63(Human); Q9CRB9(Mouse)

*AREX continuously optimizes our products. Webpage content may not reflect the latest updates. For inquiries, please contact info@arexbio.com or your local distributor.

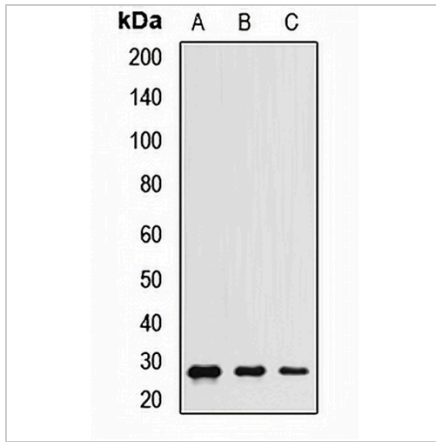
*Clone Number, Reactivity, Source/Host and Clonality can be found in the product name and Key Features section above.

DATASHEET

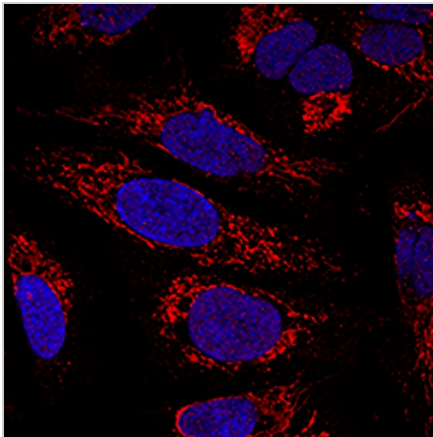
CHCHD3 Rabbit Polyclonal Antibody

CAT. NO. APA14817

DATA



Western blot analysis of CHCHD3 expression in A431 (A), HepG2 (B), mouse heart (C) whole cell lysates. (Predicted band size: 26 kD; Observed band size: 30 kD)



Immunofluorescent analysis of CHCHD3 staining in U2OS cells. Formalin-fixed cells were permeabilized with 0.1% Triton X-100 in TBS for 5-10 minutes and blocked with 3% BSA-PBS for 30 minutes at room temperature. Cells were probed with the primary antibody in 3% BSA-PBS and incubated overnight at 4 °C in a humidified chamber. Cells were washed with PBST and incubated with a AREX® Fluor 594-conjugated secondary antibody (red) in PBS at room temperature in the dark. DAPI was used to stain the cell nuclei (blue).

STORAGE

Store at 4°C short term. For long term storage, store at -20°C, avoiding freeze/thaw cycles.

NOTE

For Research Use Only. Not for diagnostic, therapeutics, prophylactic or in vivo use.