

**DATASHEET**

**Erbin Rabbit Polyclonal Antibody**

CAT. NO. APA14818

**KEY FEATURES**

Target	Erbin	Source / Host	Rabbit
Reactivity	Human, Mouse, Rat	Clonality	Polyclonal
Applications	WB	Conjugation	Unconjugated
Form / Buffer	Liquid in 0.42% Potassium phosphate, 0.87% Sodium chloride, pH 7.3, 30% glycerol, and 0.01% sodium azide.		Storage at -20°C

**BACKGROUND**

Acts as an adapter for the receptor ERBB2, in epithelia. By binding the unphosphorylated 'Tyr-1248' of receptor ERBB2, it may contribute to stabilize this unphosphorylated state . Inhibits NOD2-dependent NF-kappa-B signaling and pro-inflammatory cytokine secretion .

**APPLICATION**

To ensure optimal assay performance, AREX recommends conducting reagent titration tailored to each testing system for optimal detection results.

WB	1:500 - 1:2000
----	----------------

\*Results are sample-specific. Please refer to your local assay conditions and test parameters for reference.

**PRODUCT OVERVIEW**

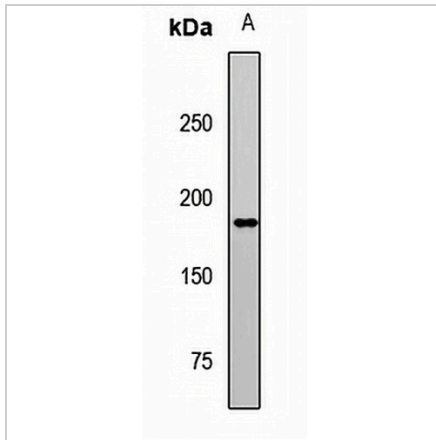
Description	Rabbit polyclonal antibody to Erbin
Specificity	Recognizes endogenous levels of Erbin protein.
Antibody Type	Primary antibody
Immunogen	Recombinant fusion protein of human Erbin
Purification	The antibody was purified by immunogen affinity chromatography.
Molecular Weight	Predicted: 146-159 kD; Observed: 182 kD
Form/Buffer	Liquid in 0.42% Potassium phosphate, 0.87% Sodium chloride, pH 7.3, 30% glycerol, and 0.01% sodium azide.
Alternative Names	ERBIN; KIAA1225; LAP2; Protein LAP2; Densin-180-like protein; Erbb2-interacting protein; Erbin
Gene Symbol	ERBB2IP
Entrez Gene	55914(Human); 59079(Mouse); 25359(Rat)
SwissProt	Q96RT1(Human); Q80TH2(Mouse); Q62733(Rat)

\*AREX continuously optimizes our products. Webpage content may not reflect the latest updates. For inquiries, please contact [info@arexbio.com](mailto:info@arexbio.com) or your local distributor.

\*Clone Number, Reactivity, Source/Host and Clonality can be found in the product name and Key Features section above.

**DATASHEET****Erbin Rabbit Polyclonal Antibody**

CAT. NO. APA14818

**DATA**

Western blot analysis of Erbin expression in HepG2 (A) whole cell lysates. (Predicted band size: 146-159 kD; Observed band size: 182 kD)

**STORAGE**

Store at 4°C short term. For long term storage, store at -20°C, avoiding freeze/thaw cycles.

**NOTE**

For Research Use Only. Not for diagnostic, therapeutics, prophylactic or in vivo use.