

## DATASHEET

# BCCIP Rabbit Polyclonal Antibody

CAT. NO. APA14819

### KEY FEATURES

Target	BCCIP	Source / Host	Rabbit
Reactivity	Human, Mouse, Rat	Clonality	Polyclonal
Applications	WB, IHC	Conjugation	Unconjugated
Form / Buffer	Liquid in 0.42% Potassium phosphate, 0.87% Sodium chloride, pH 7.3, 30% glycerol, and 0.01% sodium azide.		Storage at -20°C

### BACKGROUND

During interphase, required for microtubule organizing and anchoring activities. During mitosis, required for the organization and stabilization of the spindle pole. Isoform 2/alpha is particularly important for the regulation of microtubule anchoring, microtubule stability, spindle architecture and spindle orientation, compared to isoform 1/beta. May promote cell cycle arrest by enhancing the inhibition of CDK2 activity by CDKN1A. May be required for repair of DNA damage by homologous recombination in conjunction with BRCA2. May not be involved in non-homologous end joining (NHEJ).

### APPLICATION

To ensure optimal assay performance, AREX recommends conducting reagent titration tailored to each testing system for optimal detection results.

WB	1:500 - 1:2000
IHC	1:50 - 1:200

\*Results are sample-specific. Please refer to your local assay conditions and test parameters for reference.

### PRODUCT OVERVIEW

Description	Rabbit polyclonal antibody to BCCIP
Specificity	Recognizes endogenous levels of BCCIP protein.
Antibody Type	Primary antibody
Immunogen	Recombinant fusion protein of human BCCIP
Purification	The antibody was purified by immunogen affinity chromatography.
Molecular Weight	Predicted: 33; Observed: 50 kD
Form/Buffer	Liquid in 0.42% Potassium phosphate, 0.87% Sodium chloride, pH 7.3, 30% glycerol, and 0.01% sodium azide.
Alternative Names	TOK1; BRCA2 and CDKN1A-interacting protein; P21- and CDK-associated protein 1; Protein TOK-1
Gene Symbol	BCCIP
Entrez Gene	56647(Human); 66165(Mouse)
SwissProt	Q9P287(Human); Q9CWI3(Mouse)

\*AREX continuously optimizes our products. Webpage content may not reflect the latest updates. For inquiries, please contact [info@arexbio.com](mailto:info@arexbio.com) or your local distributor.

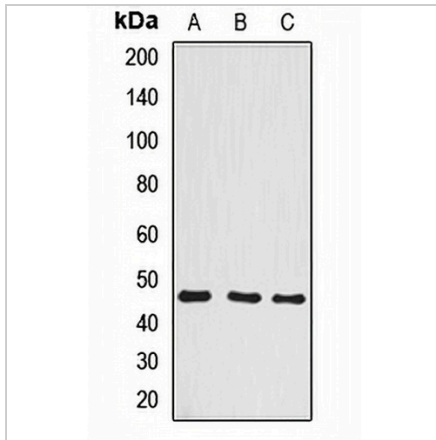
\*Clone Number, Reactivity, Source/Host and Clonality can be found in the product name and Key Features section above.

**DATASHEET**

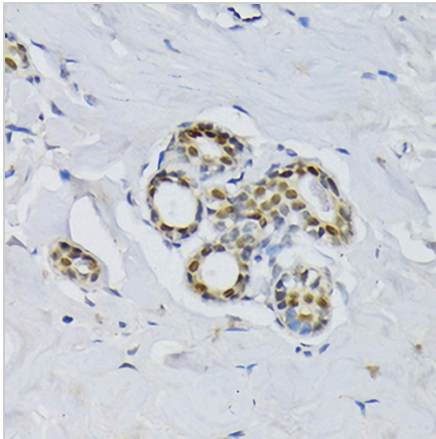
**BCCIP Rabbit Polyclonal Antibody**

CAT. NO. APA14819

**DATA**



Western blot analysis of BCCIP expression in SKOV3 (A), HeLa (B), mouse brain (C) whole cell lysates. (Predicted band size: 33; 35; 36 kD; Observed band size: 50 kD)



Immunohistochemical analysis of BCCIP staining in human breast formalin fixed paraffin embedded tissue section. The section was pre-treated using heat mediated antigen retrieval with sodium citrate buffer (pH 6.0). The section was then incubated with the antibody at room temperature and detected using an HRP conjugated compact polymer system. DAB was used as the chromogen. The section was then counterstained with haematoxylin and mounted with DPX.

**STORAGE**

Store at 4°C short term. For long term storage, store at -20°C, avoiding freeze/thaw cycles.

**NOTE**

For Research Use Only. Not for diagnostic, therapeutics, prophylactic or in vivo use.