

## DATASHEET

# CIRH1A Rabbit Polyclonal Antibody

CAT. NO. APA14820

### KEY FEATURES

Target	CIRH1A	Source / Host	Rabbit
Reactivity	Human, Mouse	Clonality	Polyclonal
Applications	WB	Conjugation	Unconjugated
Form / Buffer	Liquid in 0.42% Potassium phosphate, 0.87% Sodium chloride, pH 7.3, 30% glycerol, and 0.01% sodium azide.	Storage	at-20°C

### BACKGROUND

Ribosome biogenesis factor. Involved in nucleolar processing of pre-18S ribosomal RNA. Part of the small subunit (SSU) processome, first precursor of the small eukaryotic ribosomal subunit. During the assembly of the SSU processome in the nucleolus, many ribosome biogenesis factors, an RNA chaperone and ribosomal proteins associate with the nascent pre-rRNA and work in concert to generate RNA folding, modifications, rearrangements and cleavage as well as targeted d Involved in SSU pre-rRNA processing at sites A', A0, 1 and 2b. Required for optimal pre-ribosomal RNA transcription by RNA polymerase processome, first precursor of the small eukaryotic ribosomal subunit.

### APPLICATION

To ensure optimal assay performance, AREX recommends conducting reagent titration tailored to each testing system for optimal detection results.

WB	1:500 - 1:2000
----	----------------

\*Results are sample-specific. Please refer to your local assay conditions and test parameters for reference.

### PRODUCT OVERVIEW

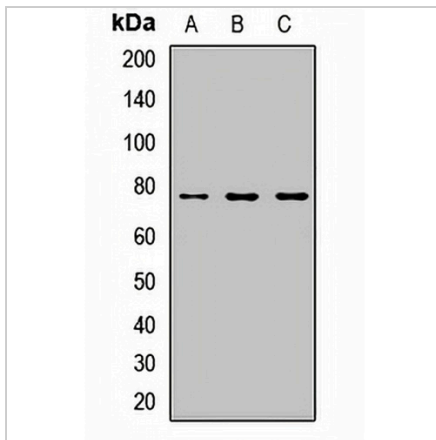
Description	Rabbit polyclonal antibody to CIRH1A
Specificity	Recognizes endogenous levels of CIRH1A protein.
Antibody Type	Primary antibody
Immunogen	Recombinant fusion protein of human CIRH1A
Purification	The antibody was purified by immunogen affinity chromatography.
Molecular Weight	Predicted: 64; Observed: 77 kD
Form/Buffer	Liquid in 0.42% Potassium phosphate, 0.87% Sodium chloride, pH 7.3, 30% glycerol, and 0.01% sodium azide.
Alternative Names	KIAA1988; UTP4; Cirhin
Gene Symbol	CIRH1A
Entrez Gene	84916(Human); 21771(Mouse)
SwissProt	Q969X6(Human); Q8R2N2(Mouse)

\*AREX continuously optimizes our products. Webpage content may not reflect the latest updates. For inquiries, please contact [info@arexbio.com](mailto:info@arexbio.com) or your local distributor.

\*Clone Number, Reactivity, Source/Host and Clonality can be found in the product name and Key Features section above.

**DATASHEET****CIRH1A Rabbit Polyclonal Antibody**

CAT. NO. APA14820

**DATA**

Western blot analysis of CIRH1A expression in HeLa (A), K562 (B), mouse liver (C) whole cell lysates. (Predicted band size: 64; 69; 76 kD; Observed band size: 77 kD)

**STORAGE**

Store at 4°C short term. For long term storage, store at -20°C, avoiding freeze/thaw cycles.

**NOTE**

For Research Use Only. Not for diagnostic, therapeutics, prophylactic or in vivo use.