

DATASHEET

TMC1 Rabbit Polyclonal Antibody

CAT. NO. APA14821

KEY FEATURES

Target	TMC1	Source / Host	Rabbit
Reactivity	Human, Mouse	Clonality	Polyclonal
Applications	WB, IHC	Conjugation	Unconjugated
Form / Buffer	Liquid in 0.42% Potassium phosphate, 0.87% Sodium chloride, pH 7.3, 30% glycerol, and 0.01% sodium azide.		Storage at -20°C

BACKGROUND

Pore-forming subunit of the mechanotransducer (MET) non-selective cation channel complex located at the tips of stereocilia of cochlear hair cells and that mediates sensory transduction in the auditory system . The MET complex is composed of two dimeric pore-forming ion-conducting transmembrane TMC (TMC1 or TMC2) subunits, and aided by several auxiliary proteins including LHFPL5, TMIE, CIB2/3 and TOMT, and the tip-link PCDH15 . MET channel is activated by tension in the tip-link extending from the side wall of one stereocilium to the tip of the adjacent shorter stereocilium, where the channel is located . TMC1 MET channel is highly permeable to calcium and likely transports monovalent cations . Also involved in vestibular hair cells transduction current .

APPLICATION

To ensure optimal assay performance, AREX recommends conducting reagent titration tailored to each testing system for optimal detection results.

WB	1:500 - 1:2000
IHC	1:50 - 1:200

*Results are sample-specific. Please refer to your local assay conditions and test parameters for reference.

PRODUCT OVERVIEW

Description	Rabbit polyclonal antibody to TMC1
Specificity	Recognizes endogenous levels of TMC1 protein.
Antibody Type	Primary antibody
Immunogen	KLH-conjugated synthetic peptide of human TMC1
Purification	The antibody was purified by immunogen affinity chromatography.
Molecular Weight	Predicted: 87 kD; Observed: 88 kD
Form/Buffer	Liquid in 0.42% Potassium phosphate, 0.87% Sodium chloride, pH 7.3, 30% glycerol, and 0.01% sodium azide.
Alternative Names	Transmembrane channel-like protein 1; Transmembrane cochlear-expressed protein 1
Gene Symbol	TMC1
Entrez Gene	117531(Human); 13409(Mouse)
SwissProt	Q8TDI8(Human); Q8R4P5(Mouse)

*AREX continuously optimizes our products. Webpage content may not reflect the latest updates. For inquiries, please contact info@arexbio.com or your local distributor.

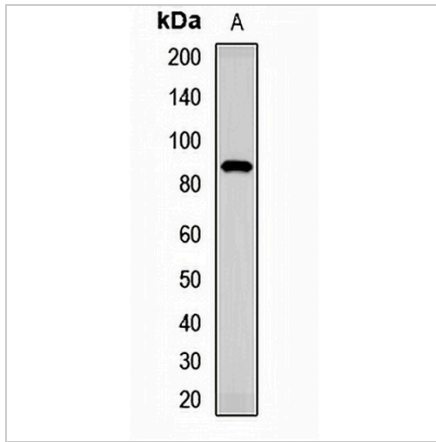
*Clone Number, Reactivity, Source/Host and Clonality can be found in the product name and Key Features section above.

DATASHEET

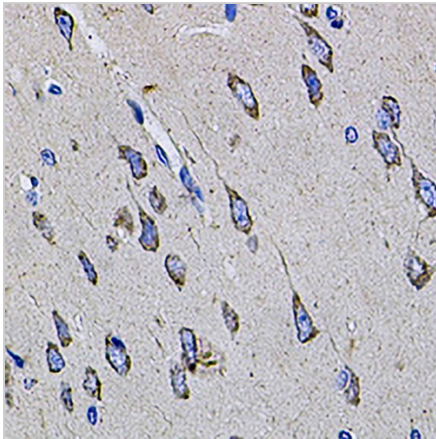
TMC1 Rabbit Polyclonal Antibody

CAT. NO. APA14821

DATA



Western blot analysis of TMC1 expression in mouse eye (A) whole cell lysates. (Predicted band size: 87 kD; Observed band size: 88 kD)



Immunohistochemical analysis of TMC1 staining in rat brain formalin fixed paraffin embedded tissue section. The section was pre-treated using heat mediated antigen retrieval with sodium citrate buffer (pH 6.0). The section was then incubated with the antibody at room temperature and detected using an HRP conjugated compact polymer system. DAB was used as the chromogen. The section was then counterstained with haematoxylin and mounted with DPX.

STORAGE

Store at 4°C short term. For long term storage, store at -20°C, avoiding freeze/thaw cycles.

NOTE

For Research Use Only. Not for diagnostic, therapeutics, prophylactic or in vivo use.