

**DATASHEET**

**HFM1 Rabbit Polyclonal Antibody**

CAT. NO. APA14825

**KEY FEATURES**

Target	HFM1	Source / Host	Rabbit
Reactivity	Human, Mouse, Rat	Clonality	Polyclonal
Applications	WB, IHC	Conjugation	Unconjugated
Form / Buffer	Liquid in 0.42% Potassium phosphate, 0.87% Sodium chloride, pH 7.3, 30% glycerol, and 0.01% sodium azide.		Storage at -20°C

**BACKGROUND**

Required for crossover formation and complete synapsis of homologous chromosomes during meiosis.

**APPLICATION**

To ensure optimal assay performance, AREX recommends conducting reagent titration tailored to each testing system for optimal detection results.

WB	1:500 - 1:2000
IHC	1:50 - 1:200

\*Results are sample-specific. Please refer to your local assay conditions and test parameters for reference.

**PRODUCT OVERVIEW**

Description	Rabbit polyclonal antibody to HFM1
Specificity	Recognizes endogenous levels of HFM1 protein.
Antibody Type	Primary antibody
Immunogen	Recombinant fusion protein of human HFM1
Purification	The antibody was purified by immunogen affinity chromatography.
Molecular Weight	Predicted: 62; Observed: 130 kD
Form/Buffer	Liquid in 0.42% Potassium phosphate, 0.87% Sodium chloride, pH 7.3, 30% glycerol, and 0.01% sodium azide.
Alternative Names	SEC3D1; Probable ATP-dependent DNA helicase HFM1; SEC63 domain-containing protein 1
Gene Symbol	HFM1
Entrez Gene	164045(Human)
SwissProt	A2PYH4(Human)

\*AREX continuously optimizes our products. Webpage content may not reflect the latest updates. For inquiries, please contact [info@arexbio.com](mailto:info@arexbio.com) or your local distributor.

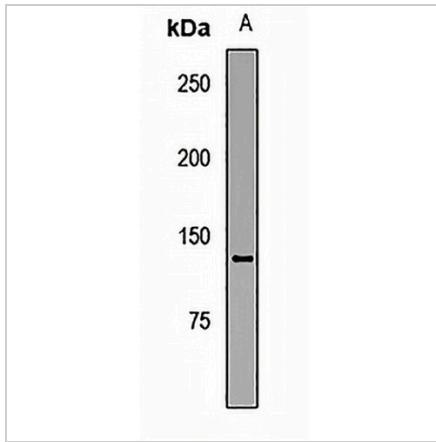
\*Clone Number, Reactivity, Source/Host and Clonality can be found in the product name and Key Features section above.

**DATASHEET**

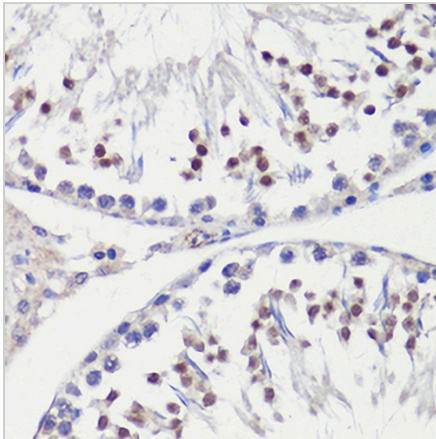
**HFM1 Rabbit Polyclonal Antibody**

CAT. NO. APA14825

**DATA**



Western blot analysis of HFM1 expression in K562 (A) whole cell lysates. (Predicted band size: 62; 162 kD; Observed band size: 130 kD)



Immunohistochemical analysis of HFM1 staining in rat testis formalin fixed paraffin embedded tissue section. The section was pre-treated using heat mediated antigen retrieval with sodium citrate buffer (pH 6.0). The section was then incubated with the antibody at room temperature and detected using an HRP conjugated compact polymer system. DAB was used as the chromogen. The section was then counterstained with haematoxylin and mounted with DPX.

**STORAGE**

Store at 4°C short term. For long term storage, store at -20°C, avoiding freeze/thaw cycles.

**NOTE**

For Research Use Only. Not for diagnostic, therapeutics, prophylactic or in vivo use.