

DATASHEET

ALDH7A1 Rabbit Polyclonal Antibody

CAT. NO. APA14830

KEY FEATURES

Target	ALDH7A1	Source / Host	Rabbit
Reactivity	Human, Mouse, Rat	Clonality	Polyclonal
Applications	WB, IF/ICC	Conjugation	Unconjugated
Form / Buffer	Liquid in 0.42% Potassium phosphate, 0.87% Sodium chloride, pH 7.3, 30% glycerol, and 0.01% sodium azide.		Storage at -20°C

BACKGROUND

Aldehyde dehydrogenase enzyme that mediates important protective effects . Protects cells from oxidative stress by metabolizing a number of lipid peroxidation-derived aldehydes . Involved in cellular defense against hyperosmotic stress by metabolizing betaine aldehyde to betaine, an important cellular osmolyte and methyl donor .

APPLICATION

To ensure optimal assay performance, AREX recommends conducting reagent titration tailored to each testing system for optimal detection results.

WB	1:500 - 1:2000
IF/ICC	1:50 - 1:200

*Results are sample-specific. Please refer to your local assay conditions and test parameters for reference.

PRODUCT OVERVIEW

Description	Rabbit polyclonal antibody to ALDH7A1
Specificity	Recognizes endogenous levels of ALDH7A1 protein.
Antibody Type	Primary antibody
Immunogen	Recombinant fusion protein of human ALDH7A1
Purification	The antibody was purified by immunogen affinity chromatography.
Molecular Weight	Predicted: 51; Observed: 58 kD
Form/Buffer	Liquid in 0.42% Potassium phosphate, 0.87% Sodium chloride, pH 7.3, 30% glycerol, and 0.01% sodium azide.
Alternative Names	ATQ1; Alpha-amino adipic semialdehyde dehydrogenase; Alpha-AASA dehydrogenase; Aldehyde dehydrogenase family 7 member A1; Antiquitin-1; Betaine aldehyde dehydrogenase; Delta1-piperidine-6-carboxylate dehydrogenase; P6c dehydrogenase
Gene Symbol	ALDH7A1
Entrez Gene	501(Human); 110695(Mouse); 291450(Rat)
SwissProt	P49419(Human); Q9DBF1(Mouse); Q64057(Rat)

*AREX continuously optimizes our products. Webpage content may not reflect the latest updates. For inquiries, please contact info@arexbio.com or your local distributor.

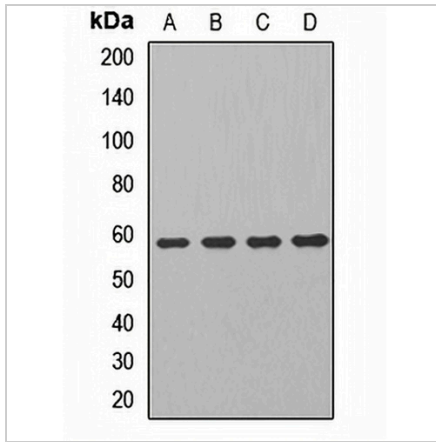
*Clone Number, Reactivity, Source/Host and Clonality can be found in the product name and Key Features section above.

DATASHEET

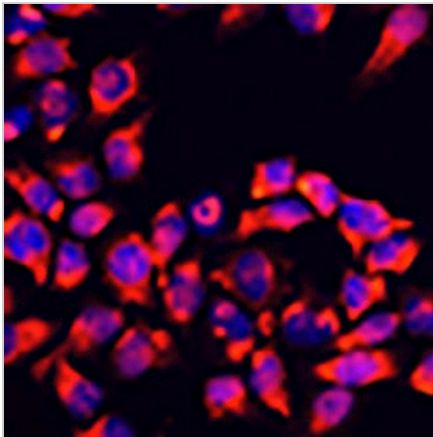
ALDH7A1 Rabbit Polyclonal Antibody

CAT. NO. APA14830

DATA



Western blot analysis of ALDH7A1 expression in SKOV3 (A), HeLa (B), mouse kidney (C), rat liver (D) whole cell lysates. (Predicted band size: 51; 55; 58 kD; Observed band size: 58 kD)



Immunofluorescent analysis of ALDH7A1 staining in HeLa cells. Formalin-fixed cells were permeabilized with 0.1% Triton X-100 in TBS for 5-10 minutes and blocked with 3% BSA-PBS for 30 minutes at room temperature. Cells were probed with the primary antibody in 3% BSA-PBS and incubated overnight at 4 °C in a humidified chamber. Cells were washed with PBST and incubated with a AREX® Fluor 594-conjugated secondary antibody (red) in PBS at room temperature in the dark. DAPI was used to stain the cell nuclei (blue).

STORAGE

Store at 4°C short term. For long term storage, store at -20°C, avoiding freeze/thaw cycles.

NOTE

For Research Use Only. Not for diagnostic, therapeutics, prophylactic or in vivo use.