

DATASHEET

GMF beta Rabbit Polyclonal Antibody

CAT. NO. APA14832

KEY FEATURES

Target	GMF beta	Source / Host	Rabbit
Reactivity	Human, Mouse, Rat	Clonality	Polyclonal
Applications	WB, IF/ICC	Conjugation	Unconjugated
Form / Buffer	Liquid in 0.42% Potassium phosphate, 0.87% Sodium chloride, pH 7.3, 30% glycerol, and 0.01% sodium azide.		Storage at -20°C

BACKGROUND

This protein causes differentiation of brain cells, stimulation of neural regeneration, and inhibition of proliferation of tumor cells.

APPLICATION

To ensure optimal assay performance, AREX recommends conducting reagent titration tailored to each testing system for optimal detection results.

WB	1:500 - 1:2000
IF/ICC	1:50 - 1:200

*Results are sample-specific. Please refer to your local assay conditions and test parameters for reference.

PRODUCT OVERVIEW

Description	Rabbit polyclonal antibody to GMF beta
Specificity	Recognizes endogenous levels of GMF beta protein.
Antibody Type	Primary antibody
Immunogen	Recombinant fusion protein of human GMF beta
Purification	The antibody was purified by immunogen affinity chromatography.
Molecular Weight	Predicted: 16 kD; Observed: 17 kD
Form/Buffer	Liquid in 0.42% Potassium phosphate, 0.87% Sodium chloride, pH 7.3, 30% glycerol, and 0.01% sodium azide.
Alternative Names	Glia maturation factor beta; GMF-beta
Gene Symbol	GMFB
Entrez Gene	2764(Human); 63985(Mouse); 81661(Rat)
SwissProt	P60983(Human); Q9CQI3(Mouse); Q63228(Rat)

*AREX continuously optimizes our products. Webpage content may not reflect the latest updates. For inquiries, please contact info@arexbio.com or your local distributor.

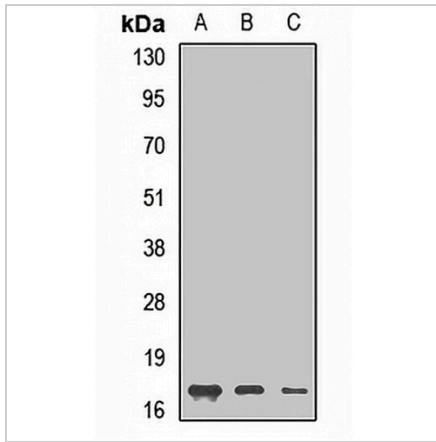
*Clone Number, Reactivity, Source/Host and Clonality can be found in the product name and Key Features section above.

DATASHEET

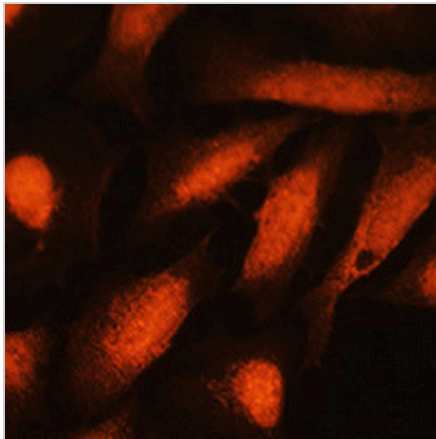
GMF beta Rabbit Polyclonal Antibody

CAT. NO. APA14832

DATA



Western blot analysis of GMF beta expression in MCF7 (A), mouse brain (B), rat kidney (C) whole cell lysates. (Predicted band size: 16 kD; Observed band size: 17 kD)



Immunofluorescent analysis of GMF beta staining in U2OS cells. Formalin-fixed cells were permeabilized with 0.1% Triton X-100 in TBS for 5-10 minutes and blocked with 3% BSA-PBS for 30 minutes at room temperature. Cells were probed with the primary antibody in 3% BSA-PBS and incubated overnight at 4 °C in a humidified chamber. Cells were washed with PBST and incubated with a AREX® Fluor 594-conjugated secondary antibody (red) in PBS at room temperature in the dark. DAPI was used to stain the cell nuclei (blue).

STORAGE

Store at 4°C short term. For long term storage, store at -20°C, avoiding freeze/thaw cycles.

NOTE

For Research Use Only. Not for diagnostic, therapeutics, prophylactic or in vivo use.