

## DATASHEET

# FERMT2 Rabbit Polyclonal Antibody

CAT. NO. APA14835

### KEY FEATURES

Target	FERMT2	Source / Host	Rabbit
Reactivity	Human, Mouse	Clonality	Polyclonal
Applications	WB, IHC	Conjugation	Unconjugated
Form / Buffer	Liquid in 0.42% Potassium phosphate, 0.87% Sodium chloride, pH 7.3, 30% glycerol, and 0.01% sodium azide.		Storage at -20°C

### BACKGROUND

Scaffolding protein that enhances integrin activation mediated by TLN1 and/or TLN2, but activates integrins only weakly by itself. Binds to membranes enriched in phosphoinositides. Enhances integrin-mediated cell adhesion onto the extracellular matrix and cell spreading; this requires both its ability to interact with integrins and with phospholipid membranes. Required for the assembly of focal adhesions. Participates in the connection between extracellular matrix adhesion sites and the actin cytoskeleton and also in the orchestration of actin assembly and cell shape modulation. Recruits FBLIM1 to focal adhesions. Plays a role in the TGFB1 and integrin signaling pathways.

### APPLICATION

To ensure optimal assay performance, AREX recommends conducting reagent titration tailored to each testing system for optimal detection results.

WB	1:500 - 1:2000
IHC	1:50 - 1:200

\*Results are sample-specific. Please refer to your local assay conditions and test parameters for reference.

### PRODUCT OVERVIEW

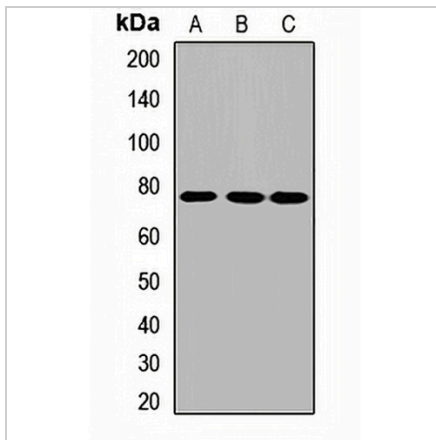
Description	Rabbit polyclonal antibody to FERMT2
Specificity	Recognizes endogenous levels of FERMT2 protein.
Antibody Type	Primary antibody
Immunogen	Recombinant fusion protein of human FERMT2
Purification	The antibody was purified by immunogen affinity chromatography.
Molecular Weight	Predicted: 72; Observed: 78 kD
Form/Buffer	Liquid in 0.42% Potassium phosphate, 0.87% Sodium chloride, pH 7.3, 30% glycerol, and 0.01% sodium azide.
Alternative Names	KIND2; MIG2; PLEKHC1; Fermitin family homolog 2; Kindlin-2; Mitogen-inducible gene 2 protein; MIG-2; Pleckstrin homology domain-containing family C member 1; PH domain-containing family C member 1
Gene Symbol	FERMT2
Entrez Gene	10979(Human); 218952(Mouse)
SwissProt	Q96AC1(Human); Q8CIB5(Mouse)

\*AREX continuously optimizes our products. Webpage content may not reflect the latest updates. For inquiries, please contact [info@arexbio.com](mailto:info@arexbio.com) or your local distributor.

\*Clone Number, Reactivity, Source/Host and Clonality can be found in the product name and Key Features section above.

**DATASHEET****FERMT2 Rabbit Polyclonal Antibody**

CAT. NO. APA14835

**DATA**

Western blot analysis of FERMT2 expression in A549 (A), MCF7 (B), mouse liver (C) whole cell lysates. (Predicted band size: 72; 77; 78 kD; Observed band size: 78 kD)

**STORAGE**

Store at 4°C short term. For long term storage, store at -20°C, avoiding freeze/thaw cycles.

**NOTE**

For Research Use Only. Not for diagnostic, therapeutics, prophylactic or in vivo use.