

DATASHEET

Symplekin Rabbit Polyclonal Antibody

CAT. NO. APA14837

KEY FEATURES

Target	Symplekin	Source / Host	Rabbit
Reactivity	Human, Mouse	Clonality	Polyclonal
Applications	WB	Conjugation	Unconjugated
Form / Buffer	Liquid in 0.42% Potassium phosphate, 0.87% Sodium chloride, pH 7.3, 30% glycerol, and 0.01% sodium azide.		Storage at -20°C

BACKGROUND

Scaffold protein that functions as a component of a multimolecular complex involved in histone mRNA 3'-end processing. Specific component of the tight junction (TJ) plaque, but might not be an exclusively junctional component. May have a house-keeping rule. Is involved in pre-mRNA polyadenylation. Enhances SSU72 phosphatase activity.

APPLICATION

To ensure optimal assay performance, AREX recommends conducting reagent titration tailored to each testing system for optimal detection results.

WB	1:500 - 1:2000
----	----------------

*Results are sample-specific. Please refer to your local assay conditions and test parameters for reference.

PRODUCT OVERVIEW

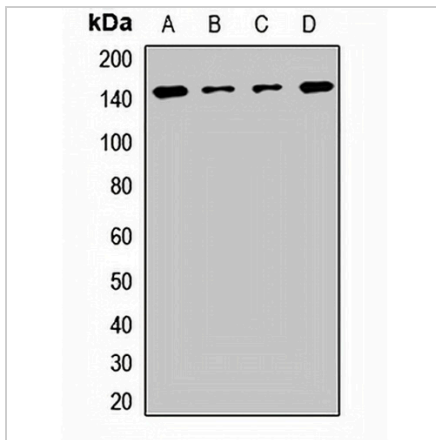
Description	Rabbit polyclonal antibody to Symplekin
Specificity	Recognizes endogenous levels of Symplekin protein.
Antibody Type	Primary antibody
Immunogen	Recombinant fusion protein of human Symplekin
Purification	The antibody was purified by immunogen affinity chromatography.
Molecular Weight	Predicted: 74; Observed: 141 kD
Form/Buffer	Liquid in 0.42% Potassium phosphate, 0.87% Sodium chloride, pH 7.3, 30% glycerol, and 0.01% sodium azide.
Alternative Names	SPK; Symplekin
Gene Symbol	SYMPK
Entrez Gene	8189(Human)
SwissProt	Q92797(Human); Q80X82(Mouse)

*AREX continuously optimizes our products. Webpage content may not reflect the latest updates. For inquiries, please contact info@arexbio.com or your local distributor.

*Clone Number, Reactivity, Source/Host and Clonality can be found in the product name and Key Features section above.

DATASHEET**Symplekin Rabbit Polyclonal Antibody**

CAT. NO. APA14837

DATA

Western blot analysis of Symplekin expression in HEK293T (A), A549 (B), mouse brain (C), mouse liver (D) whole cell lysates. (Predicted band size: 74; 141 kD; Observed band size: 141 kD)

STORAGE

Store at 4°C short term. For long term storage, store at -20°C, avoiding freeze/thaw cycles.

NOTE

For Research Use Only. Not for diagnostic, therapeutics, prophylactic or in vivo use.