

DATASHEET

MRFAP1 Rabbit Polyclonal Antibody

CAT. NO. APA14838

KEY FEATURES

Target	MRFAP1	Source / Host	Rabbit
Reactivity	Human, Mouse, Rat	Clonality	Polyclonal
Applications	WB	Conjugation	Unconjugated
Form / Buffer	Liquid in 0.42% Potassium phosphate, 0.87% Sodium chloride, pH 7.3, 30% glycerol, and 0.01% sodium azide.		Storage at -20°C

BACKGROUND

This gene encodes an intracellular protein that interacts with members of the MORF4/MRG (mortality factor on chromosome 4/MORF4 related gene) family and the tumor suppressor Rb (retinoblastoma protein.) The protein may play a role in senescence, cell growth and immortalization. Alternative splicing results in multiple transcript variants.

APPLICATION

To ensure optimal assay performance, AREX recommends conducting reagent titration tailored to each testing system for optimal detection results.

WB	1:500 - 1:2000
----	----------------

*Results are sample-specific. Please refer to your local assay conditions and test parameters for reference.

PRODUCT OVERVIEW

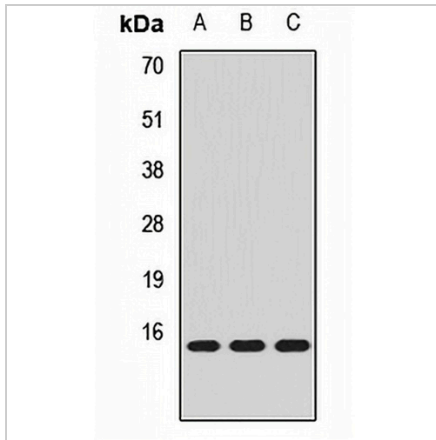
Description	Rabbit polyclonal antibody to MRFAP1
Specificity	Recognizes endogenous levels of MRFAP1 protein.
Antibody Type	Primary antibody
Immunogen	Recombinant fusion protein of human MRFAP1
Purification	The antibody was purified by immunogen affinity chromatography.
Molecular Weight	Predicted: 14 kD; Observed: 14 kD
Form/Buffer	Liquid in 0.42% Potassium phosphate, 0.87% Sodium chloride, pH 7.3, 30% glycerol, and 0.01% sodium azide.
Alternative Names	PAM14; PGR1; MORF4 family-associated protein 1; Protein PGR1; Protein associated with MRG of 14 kDa
Gene Symbol	MRFAP1
Entrez Gene	93621(Human); 67568(Mouse); 282585(Rat)
SwissProt	Q9Y605(Human); Q9CQL7(Mouse); Q5M820(Rat)

*AREX continuously optimizes our products. Webpage content may not reflect the latest updates. For inquiries, please contact info@arexbio.com or your local distributor.

*Clone Number, Reactivity, Source/Host and Clonality can be found in the product name and Key Features section above.

DATASHEET**MRFAP1 Rabbit Polyclonal Antibody**

CAT. NO. APA14838

DATA

Western blot analysis of MRFAP1 expression in A431 (A), SKOV3 (B), MCF7 (C) whole cell lysates. (Predicted band size: 14 kD; Observed band size: 14 kD)

STORAGE

Store at 4°C short term. For long term storage, store at -20°C, avoiding freeze/thaw cycles.

NOTE

For Research Use Only. Not for diagnostic, therapeutics, prophylactic or in vivo use.