

DATASHEET

Thimet Oligopeptidase Rabbit Polyclonal Antibody

CAT. NO. APA14840

KEY FEATURES

Target	Thimet Oligopeptidase	Source / Host	Rabbit
Reactivity	Human, Mouse, Rat	Clonality	Polyclonal
Applications	WB	Conjugation	Unconjugated
Form / Buffer	Liquid in 0.42% Potassium phosphate, 0.87% Sodium chloride, pH 7.3, 30% glycerol, and 0.01% sodium azide.		Storage at -20°C

BACKGROUND

Involved in the metabolism of neuropeptides under 20 amino acid residues long. Involved in cytoplasmic peptide degradation . Able to degrade the amyloid-beta precursor protein and generate amyloidogenic fragments . Also acts as a regulator of cannabinoid signaling pathway by mediating degradation of hemopressin, an antagonist peptide of the cannabinoid receptor CNR1 .

APPLICATION

To ensure optimal assay performance, AREX recommends conducting reagent titration tailored to each testing system for optimal detection results.

WB	1:500 - 1:2000
----	----------------

*Results are sample-specific. Please refer to your local assay conditions and test parameters for reference.

PRODUCT OVERVIEW

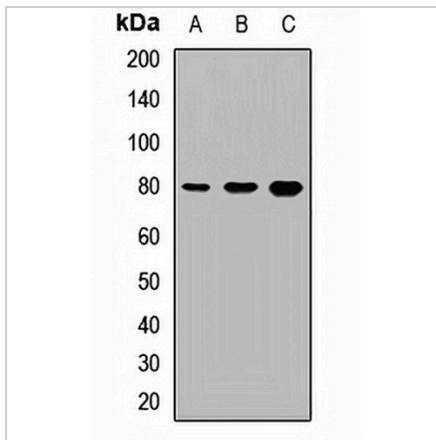
Description	Rabbit polyclonal antibody to Thimet Oligopeptidase
Specificity	Recognizes endogenous levels of Thimet Oligopeptidase protein.
Antibody Type	Primary antibody
Immunogen	Recombinant fusion protein of human Thimet Oligopeptidase
Purification	The antibody was purified by immunogen affinity chromatography.
Molecular Weight	Predicted: 28; Observed: 79 kD
Form/Buffer	Liquid in 0.42% Potassium phosphate, 0.87% Sodium chloride, pH 7.3, 30% glycerol, and 0.01% sodium azide.
Alternative Names	Thimet oligopeptidase; Endopeptidase 24.15; MP78
Gene Symbol	THOP1
Entrez Gene	7064(Human); 50492(Mouse); 64517(Rat)
SwissProt	P52888(Human); Q8C1A5(Mouse); P24155(Rat)

*AREX continuously optimizes our products. Webpage content may not reflect the latest updates. For inquiries, please contact info@arexbio.com or your local distributor.

*Clone Number, Reactivity, Source/Host and Clonality can be found in the product name and Key Features section above.

DATASHEET**Thimet Oligopeptidase Rabbit Polyclonal Antibody**

CAT. NO. APA14840

DATA

Western blot analysis of Thimet Oligopeptidase expression in mouse heart (A), mouse lung (B), rat liver (C) whole cell lysates. (Predicted band size: 28; 78 kD; Observed band size: 79 kD)

STORAGE

Store at 4°C short term. For long term storage, store at -20°C, avoiding freeze/thaw cycles.

NOTE

For Research Use Only. Not for diagnostic, therapeutics, prophylactic or in vivo use.