

DATASHEET

Sulf-2 Rabbit Polyclonal Antibody

CAT. NO. APA14844

KEY FEATURES

Target	Sulf-2	Source / Host	Rabbit
Reactivity	Human, Mouse	Clonality	Polyclonal
Applications	WB	Conjugation	Unconjugated
Form / Buffer	Liquid in 0.42% Potassium phosphate, 0.87% Sodium chloride, pH 7.3, 30% glycerol, and 0.01% sodium azide.		Storage at -20°C

BACKGROUND

Exhibits arylsulfatase activity and highly specific endoglucosamine-6-sulfatase activity . It can remove sulfate from the C-6 position of glucosamine within specific subregions of intact heparin .

APPLICATION

To ensure optimal assay performance, AREX recommends conducting reagent titration tailored to each testing system for optimal detection results.

WB	1:500 - 1:2000
----	----------------

*Results are sample-specific. Please refer to your local assay conditions and test parameters for reference.

PRODUCT OVERVIEW

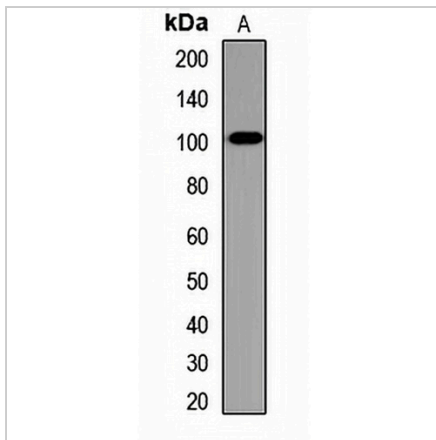
Description	Rabbit polyclonal antibody to Sulf-2
Specificity	Recognizes endogenous levels of Sulf-2 protein.
Antibody Type	Primary antibody
Immunogen	Recombinant fusion protein of human Sulf-2
Purification	The antibody was purified by immunogen affinity chromatography.
Molecular Weight	Predicted: 100 kD; Observed: 105 kD
Form/Buffer	Liquid in 0.42% Potassium phosphate, 0.87% Sodium chloride, pH 7.3, 30% glycerol, and 0.01% sodium azide.
Alternative Names	KIAA1247; Extracellular sulfatase Sulf-2; hSulf-2
Gene Symbol	SULF2
Entrez Gene	55959(Human); 72043(Mouse)
SwissProt	Q8IWU5(Human); Q8CFG0(Mouse)

*AREX continuously optimizes our products. Webpage content may not reflect the latest updates. For inquiries, please contact info@arexbio.com or your local distributor.

*Clone Number, Reactivity, Source/Host and Clonality can be found in the product name and Key Features section above.

DATASHEET**Sulf-2 Rabbit Polyclonal Antibody**

CAT. NO. APA14844

DATA

Western blot analysis of Sulf-2 expression in mouse brain (A) whole cell lysates. (Predicted band size: 100 kD; Observed band size: 105 kD)

STORAGE

Store at 4°C short term. For long term storage, store at -20°C, avoiding freeze/thaw cycles.

NOTE

For Research Use Only. Not for diagnostic, therapeutics, prophylactic or in vivo use.