

DATASHEET

SNRPB2 Rabbit Polyclonal Antibody

CAT. NO. APA14849

KEY FEATURES

Target	SNRPB2	Source / Host	Rabbit
Reactivity	Human, Mouse, Rat	Clonality	Polyclonal
Applications	WB	Conjugation	Unconjugated
Form / Buffer	Liquid in 0.42% Potassium phosphate, 0.87% Sodium chloride, pH 7.3, 30% glycerol, and 0.01% sodium azide.		Storage at -20°C

BACKGROUND

Involved in pre-mRNA splicing as component of the spliceosome . Associated with sn-RNP U2, where it contributes to the binding of stem loop IV of U2 snRNA .

APPLICATION

To ensure optimal assay performance, AREX recommends conducting reagent titration tailored to each testing system for optimal detection results.

WB	1:500 - 1:2000
----	----------------

*Results are sample-specific. Please refer to your local assay conditions and test parameters for reference.

PRODUCT OVERVIEW

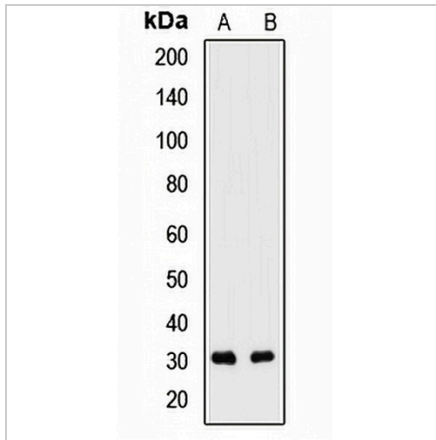
Description	Rabbit polyclonal antibody to SNRPB2
Specificity	Recognizes endogenous levels of SNRPB2 protein.
Antibody Type	Primary antibody
Immunogen	Recombinant fusion protein of human SNRPB2
Purification	The antibody was purified by immunogen affinity chromatography.
Molecular Weight	Predicted: 25 kD; Observed: 30 kD
Form/Buffer	Liquid in 0.42% Potassium phosphate, 0.87% Sodium chloride, pH 7.3, 30% glycerol, and 0.01% sodium azide.
Alternative Names	U2 small nuclear ribonucleoprotein B"; U2 snRNP B"
Gene Symbol	SNRPB2
Entrez Gene	6629(Human); 20639(Mouse)
SwissProt	P08579(Human); Q9CQI7(Mouse)

*AREX continuously optimizes our products. Webpage content may not reflect the latest updates. For inquiries, please contact info@arexbio.com or your local distributor.

*Clone Number, Reactivity, Source/Host and Clonality can be found in the product name and Key Features section above.

DATASHEET**SNRPB2 Rabbit Polyclonal Antibody**

CAT. NO. APA14849

DATA

Western blot analysis of SNRPB2 expression in HeLa (A), mouse liver (B) whole cell lysates. (Predicted band size: 25 kD; Observed band size: 30 kD)

STORAGE

Store at 4°C short term. For long term storage, store at -20°C, avoiding freeze/thaw cycles.

NOTE

For Research Use Only. Not for diagnostic, therapeutics, prophylactic or in vivo use.