

DATASHEET

Tricellulin Rabbit Polyclonal Antibody

CAT. NO. APA14850

KEY FEATURES

Target	Tricellulin	Source / Host	Rabbit
Reactivity	Human, Mouse	Clonality	Polyclonal
Applications	WB	Conjugation	Unconjugated
Form / Buffer	Liquid in 0.42% Potassium phosphate, 0.87% Sodium chloride, pH 7.3, 30% glycerol, and 0.01% sodium azide.		Storage at-20°C

BACKGROUND

Plays a role in the formation of tricellular tight junctions and of epithelial barriers . Required for normal hearing via its role in the separation of the endolymphatic and perilymphatic spaces of the organ of Corti in the inner ear, and for normal survival of hair cells in the organ of Corti .

APPLICATION

To ensure optimal assay performance, AREX recommends conducting reagent titration tailored to each testing system for optimal detection results.

WB	1:500 - 1:1000
----	----------------

*Results are sample-specific. Please refer to your local assay conditions and test parameters for reference.

PRODUCT OVERVIEW

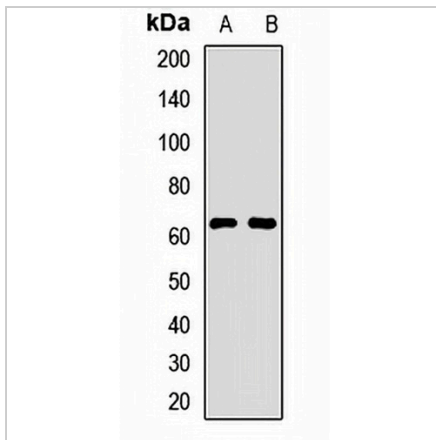
Description	Rabbit polyclonal antibody to Tricellulin
Specificity	Recognizes endogenous levels of Tricellulin protein.
Antibody Type	Primary antibody
Immunogen	KLH-conjugated synthetic peptide of human Tricellulin
Purification	The antibody was purified by immunogen affinity chromatography.
Molecular Weight	Predicted: 51; Observed: 64 kD
Form/Buffer	Liquid in 0.42% Potassium phosphate, 0.87% Sodium chloride, pH 7.3, 30% glycerol, and 0.01% sodium azide.
Alternative Names	TRIC; MARVEL domain-containing protein 2; Tricellulin
Gene Symbol	MARVELD2
Entrez Gene	153562(Human); 218518(Mouse)
SwissProt	Q8N4S9(Human); Q3UZP0(Mouse)

*AREX continuously optimizes our products. Webpage content may not reflect the latest updates. For inquiries, please contact info@arexbio.com or your local distributor.

*Clone Number, Reactivity, Source/Host and Clonality can be found in the product name and Key Features section above.

DATASHEET**Tricellulin Rabbit Polyclonal Antibody**

CAT. NO. APA14850

DATA

Western blot analysis of Tricellulin expression in A549 (A), mouse kidney (B) whole cell lysates. (Predicted band size: 51; 62; 64 kD; Observed band size: 64 kD)

STORAGE

Store at 4°C short term. For long term storage, store at -20°C, avoiding freeze/thaw cycles.

NOTE

For Research Use Only. Not for diagnostic, therapeutics, prophylactic or in vivo use.