

DATASHEET

Prefoldin 3 Rabbit Polyclonal Antibody

CAT. NO. APA14851

KEY FEATURES

Target	Prefoldin 3	Source / Host	Rabbit
Reactivity	Human, Mouse	Clonality	Polyclonal
Applications	WB	Conjugation	Unconjugated
Form / Buffer	Liquid in 0.42% Potassium phosphate, 0.87% Sodium chloride, pH 7.3, 30% glycerol, and 0.01% sodium azide.	Storage	at-20°C

BACKGROUND

Binds specifically to cytosolic chaperonin (c-CPN) and transfers target proteins to it. Binds to nascent polypeptide chain and promotes folding in an environment in which there are many competing pathways for nonnative proteins.

APPLICATION

To ensure optimal assay performance, AREX recommends conducting reagent titration tailored to each testing system for optimal detection results.

WB	1:500 - 1:2000
----	----------------

*Results are sample-specific. Please refer to your local assay conditions and test parameters for reference.

PRODUCT OVERVIEW

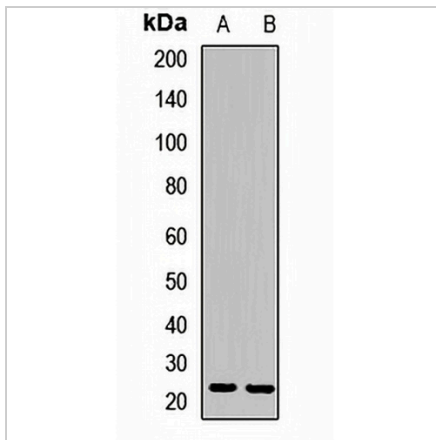
Description	Rabbit polyclonal antibody to Prefoldin 3
Specificity	Recognizes endogenous levels of Prefoldin 3 protein.
Antibody Type	Primary antibody
Immunogen	Recombinant fusion protein of human Prefoldin 3
Purification	The antibody was purified by immunogen affinity chromatography.
Molecular Weight	Predicted: 22 kD; Observed: 23 kD
Form/Buffer	Liquid in 0.42% Potassium phosphate, 0.87% Sodium chloride, pH 7.3, 30% glycerol, and 0.01% sodium azide.
Alternative Names	PFDN3; Prefoldin subunit 3; HIBBJ46; Von Hippel-Lindau-binding protein 1; VBP-1; VHL-binding protein 1
Gene Symbol	VBP1
Entrez Gene	7411(Human); 22327(Mouse)
SwissProt	P61758(Human); P61759(Mouse)

*AREX continuously optimizes our products. Webpage content may not reflect the latest updates. For inquiries, please contact info@arexbio.com or your local distributor.

*Clone Number, Reactivity, Source/Host and Clonality can be found in the product name and Key Features section above.

DATASHEET**Prefoldin 3 Rabbit Polyclonal Antibody**

CAT. NO. APA14851

DATA

Western blot analysis of Prefoldin 3 expression in HepG2 (A), mouse stomach (B) whole cell lysates. (Predicted band size: 22 kD; Observed band size: 23 kD)

STORAGE

Store at 4°C short term. For long term storage, store at -20°C, avoiding freeze/thaw cycles.

NOTE

For Research Use Only. Not for diagnostic, therapeutics, prophylactic or in vivo use.