

DATASHEET

SARA Rabbit Polyclonal Antibody

CAT. NO. APA14856

KEY FEATURES

Target	SARA	Source / Host	Rabbit
Reactivity	Human	Clonality	Polyclonal
Applications	WB, IP	Conjugation	Unconjugated
Form / Buffer	Liquid in 0.42% Potassium phosphate, 0.87% Sodium chloride, pH 7.3, 30% glycerol, and 0.01% sodium azide.		Storage at-20°C

BACKGROUND

Early endosomal protein that functions to recruit SMAD2/SMAD3 to intracellular membranes and to the TGF-beta receptor. Plays a significant role in TGF-mediated signaling by regulating the subcellular location of SMAD2 and SMAD3 and modulating the transcriptional activity of the SMAD3/SMAD4 complex. Possibly associated with TGF-beta receptor internalization.

APPLICATION

To ensure optimal assay performance, AREX recommends conducting reagent titration tailored to each testing system for optimal detection results.

WB	1:500 - 1:2000
IP	1:50 - 1:100

*Results are sample-specific. Please refer to your local assay conditions and test parameters for reference.

PRODUCT OVERVIEW

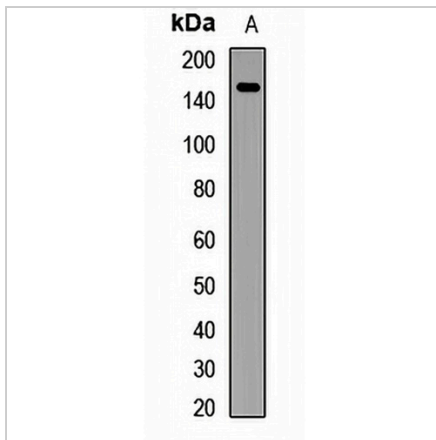
Description	Rabbit polyclonal antibody to SARA
Specificity	Recognizes endogenous levels of SARA protein.
Antibody Type	Primary antibody
Immunogen	Recombinant fusion protein of human SARA
Purification	The antibody was purified by immunogen affinity chromatography.
Molecular Weight	Predicted: 83; Observed: 156 kD
Form/Buffer	Liquid in 0.42% Potassium phosphate, 0.87% Sodium chloride, pH 7.3, 30% glycerol, and 0.01% sodium azide.
Alternative Names	MADHIP; SARA; SMADIP; Zinc finger FYVE domain-containing protein 9; Mothers against decapentaplegic homolog-interacting protein; Madh-interacting protein; Novel serine protease; NSP; Receptor activation anchor; hSARA; Smad anchor for receptor activation
Gene Symbol	ZFYVE9
Entrez Gene	9372(Human)
SwissProt	O95405(Human)

*AREX continuously optimizes our products. Webpage content may not reflect the latest updates. For inquiries, please contact info@arex.bio or your local distributor.

*Clone Number, Reactivity, Source/Host and Clonality can be found in the product name and Key Features section above.

DATASHEET**SARA Rabbit Polyclonal Antibody**

CAT. NO. APA14856

DATA

Western blot analysis of SARA expression in HeLa (A) whole cell lysates. (Predicted band size: 83; 150; 156 kD; Observed band size: 156 kD)

STORAGE

Store at 4°C short term. For long term storage, store at -20°C, avoiding freeze/thaw cycles.

NOTE

For Research Use Only. Not for diagnostic, therapeutics, prophylactic or in vivo use.