

DATASHEET

CRALBP Rabbit Polyclonal Antibody

CAT. NO. APA14863

KEY FEATURES

| | | | |
|---------------|---|---------------|--------------------|
| Target | CRALBP | Source / Host | Rabbit |
| Reactivity | Mouse, Rat | Clonality | Polyclonal |
| Applications | WB | Conjugation | Unconjugated |
| Form / Buffer | Liquid in 0.42% Potassium phosphate, 0.87% Sodium chloride, pH 7.3, 30% glycerol, and 0.01% sodium azide. | | Storage at-20°C |

BACKGROUND

Soluble retinoid carrier essential the proper function of both rod and cone photoreceptors. Participates in the regeneration of active 11-cis-retinol and 11-cis-retinaldehyde, from the inactive 11-trans products of the rhodopsin photocycle and in the de novo synthesis of these retinoids from 11-trans metabolic precursors. The cycling of retinoids between photoreceptor and adjacent pigment epithelium cells is known as the 'visual cycle'.

APPLICATION

To ensure optimal assay performance, AREX recommends conducting reagent titration tailored to each testing system for optimal detection results.

| | |
|----|----------------|
| WB | 1:500 - 1:2000 |
|----|----------------|

*Results are sample-specific. Please refer to your local assay conditions and test parameters for reference.

PRODUCT OVERVIEW

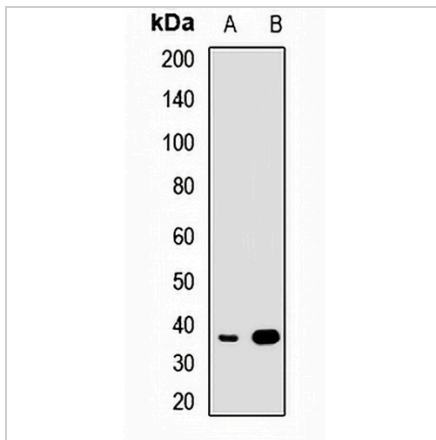
| | |
|-------------------|---|
| Description | Rabbit polyclonal antibody to CRALBP |
| Specificity | Recognizes endogenous levels of CRALBP protein. |
| Antibody Type | Primary antibody |
| Immunogen | Recombinant fusion protein of human CRALBP |
| Purification | The antibody was purified by immunogen affinity chromatography. |
| Molecular Weight | Predicted: 36 kD; Observed: 36 kD |
| Form/Buffer | Liquid in 0.42% Potassium phosphate, 0.87% Sodium chloride, pH 7.3, 30% glycerol, and 0.01% sodium azide. |
| Alternative Names | CRALBP; Retinaldehyde-binding protein 1; Cellular retinaldehyde-binding protein |
| Gene Symbol | RLBP1 |
| Entrez Gene | 6017(Human); 19771(Mouse) |
| SwissProt | P12271(Human); Q9Z275(Mouse) |

*AREX continuously optimizes our products. Webpage content may not reflect the latest updates. For inquiries, please contact info@arexbio.com or your local distributor.

*Clone Number, Reactivity, Source/Host and Clonality can be found in the product name and Key Features section above.

DATASHEET**CRALBP Rabbit Polyclonal Antibody**

CAT. NO. APA14863

DATA

Western blot analysis of CRALBP expression in mouse eye (A), rat brain (B) whole cell lysates. (Predicted band size: 36 kD; Observed band size: 36 kD)

STORAGE

Store at 4°C short term. For long term storage, store at -20°C, avoiding freeze/thaw cycles.

NOTE

For Research Use Only. Not for diagnostic, therapeutics, prophylactic or in vivo use.