

DATASHEET

SMU1 Rabbit Polyclonal Antibody

CAT. NO. APA14865

KEY FEATURES

| | | | |
|---------------|---|---------------|---------------------|
| Target | SMU1 | Source / Host | Rabbit |
| Reactivity | Human, Mouse, Rat | Clonality | Polyclonal |
| Applications | WB | Conjugation | Unconjugated |
| Form / Buffer | Liquid in 0.42% Potassium phosphate, 0.87% Sodium chloride, pH 7.3, 30% glycerol, and 0.01% sodium azide. | | Storage at -20°C |

BACKGROUND

Involved in pre-mRNA splicing as a component of the spliceosome . Regulates alternative splicing of the HSPG2 pre-mRNA . Required for normal accumulation of IK . Required for normal mitotic spindle assembly and normal progress through mitosis .

APPLICATION

To ensure optimal assay performance, AREX recommends conducting reagent titration tailored to each testing system for optimal detection results.

| | |
|----|----------------|
| WB | 1:500 - 1:2000 |
|----|----------------|

*Results are sample-specific. Please refer to your local assay conditions and test parameters for reference.

PRODUCT OVERVIEW

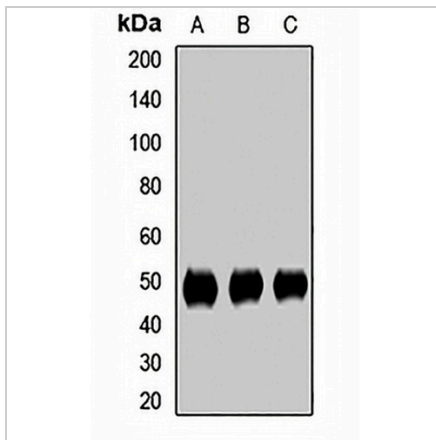
| | |
|-------------------|---|
| Description | Rabbit polyclonal antibody to SMU1 |
| Specificity | Recognizes endogenous levels of SMU1 protein. |
| Antibody Type | Primary antibody |
| Immunogen | Recombinant fusion protein of human SMU1 |
| Purification | The antibody was purified by immunogen affinity chromatography. |
| Molecular Weight | Predicted: 39; Observed: 50 kD |
| Form/Buffer | Liquid in 0.42% Potassium phosphate, 0.87% Sodium chloride, pH 7.3, 30% glycerol, and 0.01% sodium azide. |
| Alternative Names | WD40 repeat-containing protein SMU1; Smu-1 suppressor of mec-8 and unc-52 protein homolog |
| Gene Symbol | SMU1 |
| Entrez Gene | 55234(Human); 74255(Mouse); 117541(Rat) |
| SwissProt | Q2TAY7(Human); Q3UKJ7(Mouse); Q99M63(Rat) |

*AREX continuously optimizes our products. Webpage content may not reflect the latest updates. For inquiries, please contact info@arexbio.com or your local distributor.

*Clone Number, Reactivity, Source/Host and Clonality can be found in the product name and Key Features section above.

DATASHEET**SMU1 Rabbit Polyclonal Antibody**

CAT. NO. APA14865

DATA

Western blot analysis of SMU1 expression in A431 (A), HT29 (B), mouse liver (C) whole cell lysates. (Predicted band size: 39; 57 kD; Observed band size: 50 kD)

STORAGE

Store at 4°C short term. For long term storage, store at -20°C, avoiding freeze/thaw cycles.

NOTE

For Research Use Only. Not for diagnostic, therapeutics, prophylactic or in vivo use.