

DATASHEET

CLPP Rabbit Polyclonal Antibody

CAT. NO. APA14867

KEY FEATURES

Target	CLPP	Source / Host	Rabbit
Reactivity	Human, Mouse, Rat	Clonality	Polyclonal
Applications	WB	Conjugation	Unconjugated
Form / Buffer	Liquid in 0.42% Potassium phosphate, 0.87% Sodium chloride, pH 7.3, 30% glycerol, and 0.01% sodium azide.		Storage at -20°C

BACKGROUND

Protease component of the ClpXP complex that cleaves peptides and various proteins in an ATP-dependent process. Has low peptidase activity in the absence of CLPX. The ClpXP complex can degrade CSN1S1, CSN2 and CSN3, as well as synthetic peptides (in vitro) and may be responsible for a fairly general and central housekeeping function rather than for the degradation of specific substrates and may be responsible for a fairly general and central housekeeping function rather than for the degradation of specific substrates . Cleaves PINK1 in the mitochondrion .

APPLICATION

To ensure optimal assay performance, AREX recommends conducting reagent titration tailored to each testing system for optimal detection results.

WB	1:500 - 1:2000
----	----------------

*Results are sample-specific. Please refer to your local assay conditions and test parameters for reference.

PRODUCT OVERVIEW

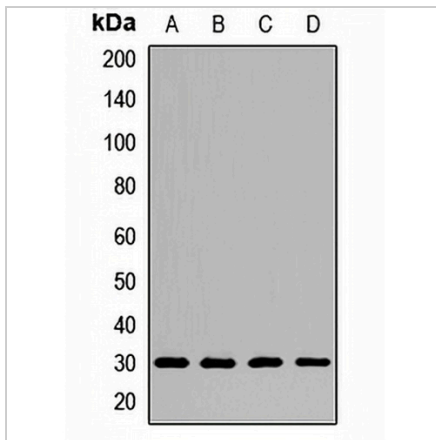
Description	Rabbit polyclonal antibody to CLPP
Specificity	Recognizes endogenous levels of CLPP protein.
Antibody Type	Primary antibody
Immunogen	Recombinant fusion protein of human CLPP
Purification	The antibody was purified by immunogen affinity chromatography.
Molecular Weight	Predicted: 30 kD; Observed: 30 kD
Form/Buffer	Liquid in 0.42% Potassium phosphate, 0.87% Sodium chloride, pH 7.3, 30% glycerol, and 0.01% sodium azide.
Alternative Names	ATP-dependent Clp protease proteolytic subunit mitochondrial; Endopeptidase Clp
Gene Symbol	CLPP
Entrez Gene	8192(Human); 53895(Mouse)
SwissProt	Q16740(Human); O88696(Mouse)

*AREX continuously optimizes our products. Webpage content may not reflect the latest updates. For inquiries, please contact info@arexbio.com or your local distributor.

*Clone Number, Reactivity, Source/Host and Clonality can be found in the product name and Key Features section above.

DATASHEET**CLPP Rabbit Polyclonal Antibody**

CAT. NO. APA14867

DATA

Western blot analysis of CLPP expression in A549 (A), mouse heart (B), mouse lung (C), rat liver (D) whole cell lysates. (Predicted band size: 30 kD; Observed band size: 30 kD)

STORAGE

Store at 4°C short term. For long term storage, store at -20°C, avoiding freeze/thaw cycles.

NOTE

For Research Use Only. Not for diagnostic, therapeutics, prophylactic or in vivo use.