

DATASHEET

ATP5L Rabbit Polyclonal Antibody

CAT. NO. APA14874

KEY FEATURES

| | | | |
|---------------|---|---------------|--------------------|
| Target | ATP5L | Source / Host | Rabbit |
| Reactivity | Human, Mouse, Rat | Clonality | Polyclonal |
| Applications | WB | Conjugation | Unconjugated |
| Form / Buffer | Liquid in 0.42% Potassium phosphate, 0.87% Sodium chloride, pH 7.3, 30% glycerol, and 0.01% sodium azide. | | Storage at-20°C |

BACKGROUND

Subunit g, of the mitochondrial membrane ATP synthase complex (F(1)F(0) ATP synthase or Complex V) that produces ATP from ADP in the presence of a proton gradient across the membrane which is generated by electron transport complexes of the respiratory chain F(0) ATP synthase or Complex V) that produces ATP from ADP in the presence of a proton gradient across the membrane which is generated by electron transport complexes of the respiratory chain . ATP synthase complex consist of a soluble F(1) head domain - the catalytic core - and a membrane F(1) domain - the membrane proton channel . These two domains are linked by a central stalk rotating inside the F(1) region and a stationary peripheral stalk .

APPLICATION

To ensure optimal assay performance, AREX recommends conducting reagent titration tailored to each testing system for optimal detection results.

| | |
|----|----------------|
| WB | 1:500 - 1:2000 |
|----|----------------|

*Results are sample-specific. Please refer to your local assay conditions and test parameters for reference.

PRODUCT OVERVIEW

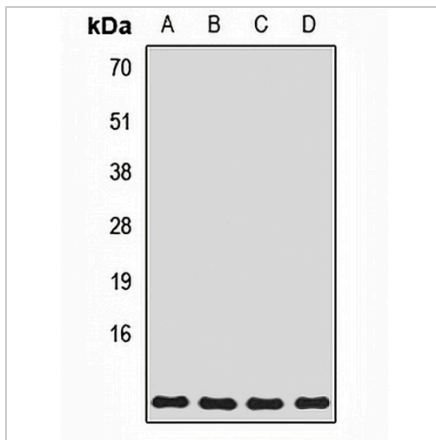
| | |
|-------------------|---|
| Description | Rabbit polyclonal antibody to ATP5L |
| Specificity | Recognizes endogenous levels of ATP5L protein. |
| Antibody Type | Primary antibody |
| Immunogen | Recombinant fusion protein of human ATP5L |
| Purification | The antibody was purified by immunogen affinity chromatography. |
| Molecular Weight | Predicted: 11 kD; Observed: 11 kD |
| Form/Buffer | Liquid in 0.42% Potassium phosphate, 0.87% Sodium chloride, pH 7.3, 30% glycerol, and 0.01% sodium azide. |
| Alternative Names | ATP synthase subunit g mitochondrial; ATPase subunit g |
| Gene Symbol | ATP5L |
| Entrez Gene | 10632(Human); 27425(Mouse); 300677(Rat) |
| SwissProt | O75964(Human); Q9CPQ8(Mouse); Q6PDU7(Rat) |

*AREX continuously optimizes our products. Webpage content may not reflect the latest updates. For inquiries, please contact info@arexbio.com or your local distributor.

*Clone Number, Reactivity, Source/Host and Clonality can be found in the product name and Key Features section above.

DATASHEET**ATP5L Rabbit Polyclonal Antibody**

CAT. NO. APA14874

DATA

Western blot analysis of ATP5L expression in A549 (A), HepG2 (B), mouse liver (C), rat brain (D) whole cell lysates. (Predicted band size: 11 kD; Observed band size: 11 kD)

STORAGE

Store at 4°C short term. For long term storage, store at -20°C, avoiding freeze/thaw cycles.

NOTE

For Research Use Only. Not for diagnostic, therapeutics, prophylactic or in vivo use.