

DATASHEET

SUPT5H Rabbit Polyclonal Antibody

CAT. NO. APA14875

KEY FEATURES

Target	SUPT5H	Source / Host	Rabbit
Reactivity	Human, Mouse, Rat	Clonality	Polyclonal
Applications	WB	Conjugation	Unconjugated
Form / Buffer	Liquid in 0.42% Potassium phosphate, 0.87% Sodium chloride, pH 7.3, 30% glycerol, and 0.01% sodium azide.		Storage at -20°C

BACKGROUND

Component of the DRB sensitivity-inducing factor complex (DSIF complex), which regulates mRNA processing and transcription elongation by RNA polymerase II, which regulates mRNA processing and transcription elongation by RNA polymerase II. DSIF positively regulates mRNA capping by stimulating the mRNA guanylyltransferase activity of RNGTT/CAP1A. DSIF also acts cooperatively with the negative elongation factor complex (NELF complex) to enhance transcriptional pausing at sites proximal to the promoter. Transcriptional pausing may facilitate the assembly of an elongation competent RNA polymerase II complex. DSIF and NELF promote pausing by inhibition of the transcription elongation factor TFIIS/S-II.

APPLICATION

To ensure optimal assay performance, AREX recommends conducting reagent titration tailored to each testing system for optimal detection results.

WB	1:500 - 1:2000
----	----------------

*Results are sample-specific. Please refer to your local assay conditions and test parameters for reference.

PRODUCT OVERVIEW

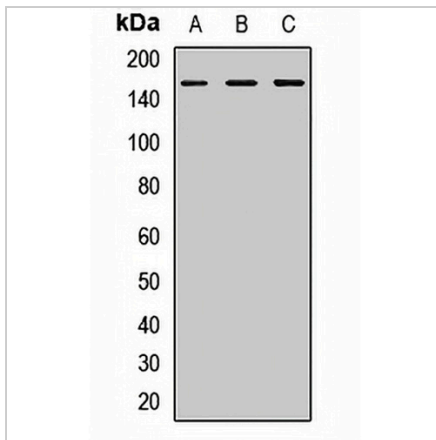
Description	Rabbit polyclonal antibody to SUPT5H
Specificity	Recognizes endogenous levels of SUPT5H protein.
Antibody Type	Primary antibody
Immunogen	Recombinant fusion protein of human SUPT5H
Purification	The antibody was purified by immunogen affinity chromatography.
Molecular Weight	Predicted: 120; Observed: 160 kD
Form/Buffer	Liquid in 0.42% Potassium phosphate, 0.87% Sodium chloride, pH 7.3, 30% glycerol, and 0.01% sodium azide.
Alternative Names	SPT5; SPT5H; Transcription elongation factor SPT5; hSPT5; DRB sensitivity-inducing factor 160 kDa subunit; DSIF p160; DRB sensitivity-inducing factor large subunit; DSIF large subunit; Tat-cotransactivator 1 protein; Tat-CT1 protein
Gene Symbol	SUPT5H
Entrez Gene	6829(Human); 20924(Mouse)
SwissProt	O00267(Human); O55201(Mouse)

*AREX continuously optimizes our products. Webpage content may not reflect the latest updates. For inquiries, please contact info@arexbio.com or your local distributor.

*Clone Number, Reactivity, Source/Host and Clonality can be found in the product name and Key Features section above.

DATASHEET**SUPT5H Rabbit Polyclonal Antibody**

CAT. NO. APA14875

DATA

Western blot analysis of SUPT5H expression in HeLa (A), A549 (B), mouse liver (C) whole cell lysates. (Predicted band size: 120; 121 kD; Observed band size: 160 kD)

STORAGE

Store at 4°C short term. For long term storage, store at -20°C, avoiding freeze/thaw cycles.

NOTE

For Research Use Only. Not for diagnostic, therapeutics, prophylactic or in vivo use.