

DATASHEET

SQRDL Rabbit Polyclonal Antibody

CAT. NO. APA14876

KEY FEATURES

Target	SQRDL	Source / Host	Rabbit
Reactivity	Human, Mouse	Clonality	Polyclonal
Applications	WB	Conjugation	Unconjugated
Form / Buffer	Liquid in 0.42% Potassium phosphate, 0.87% Sodium chloride, pH 7.3, 30% glycerol, and 0.01% sodium azide.		Storage at-20°C

BACKGROUND

Catalyzes the oxidation of hydrogen sulfide with the help of a quinone, such as ubiquinone-10, giving rise to thiosulfate and ultimately to sulfane (molecular sulfur) atoms. Requires an additional electron acceptor; can use sulfite, sulfide or cyanide (in vitro) atoms. Requires an additional electron acceptor; can use sulfite, sulfide or cyanide (in vitro) . It is believed the in vivo electron acceptor is glutathione .

APPLICATION

To ensure optimal assay performance, AREX recommends conducting reagent titration tailored to each testing system for optimal detection results.

WB	1:500 - 1:2000
----	----------------

*Results are sample-specific. Please refer to your local assay conditions and test parameters for reference.

PRODUCT OVERVIEW

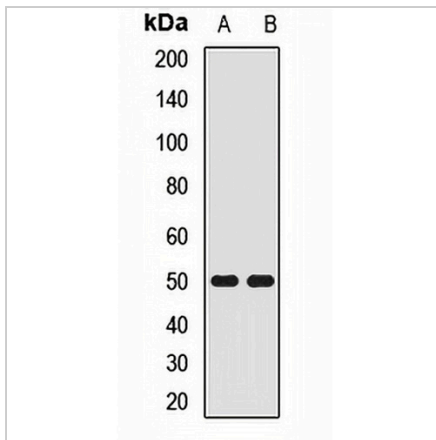
Description	Rabbit polyclonal antibody to SQRDL
Specificity	Recognizes endogenous levels of SQRDL protein.
Antibody Type	Primary antibody
Immunogen	Recombinant fusion protein of human SQRDL
Purification	The antibody was purified by immunogen affinity chromatography.
Molecular Weight	Predicted: 49 kD; Observed: 48 kD
Form/Buffer	Liquid in 0.42% Potassium phosphate, 0.87% Sodium chloride, pH 7.3, 30% glycerol, and 0.01% sodium azide.
Alternative Names	Sulfide:quinone oxidoreductase mitochondrial
Gene Symbol	SQRDL
Entrez Gene	58472(Human)
SwissProt	Q9Y6N5(Human)

*AREX continuously optimizes our products. Webpage content may not reflect the latest updates. For inquiries, please contact info@arexbio.com or your local distributor.

*Clone Number, Reactivity, Source/Host and Clonality can be found in the product name and Key Features section above.

DATASHEET**SQRDL Rabbit Polyclonal Antibody**

CAT. NO. APA14876

DATA

Western blot analysis of SQRDL expression in A549 (A), HepG2 (B) whole cell lysates. (Predicted band size: 49 kD; Observed band size: 48 kD)

STORAGE

Store at 4°C short term. For long term storage, store at -20°C, avoiding freeze/thaw cycles.

NOTE

For Research Use Only. Not for diagnostic, therapeutics, prophylactic or in vivo use.