

DATASHEET

Sec10 Rabbit Polyclonal Antibody

CAT. NO. APA14877

KEY FEATURES

Target	Sec10	Source / Host	Rabbit
Reactivity	Human, Mouse, Rat	Clonality	Polyclonal
Applications	WB, IHC	Conjugation	Unconjugated
Form / Buffer	Liquid in 0.42% Potassium phosphate, 0.87% Sodium chloride, pH 7.3, 30% glycerol, and 0.01% sodium azide.		Storage at -20°C

BACKGROUND

Component of the exocyst complex involved in the docking of exocytic vesicles with fusion sites on the plasma membrane.

APPLICATION

To ensure optimal assay performance, AREX recommends conducting reagent titration tailored to each testing system for optimal detection results.

WB	1:500 - 1:2000
IHC	1:50 - 1:200

*Results are sample-specific. Please refer to your local assay conditions and test parameters for reference.

PRODUCT OVERVIEW

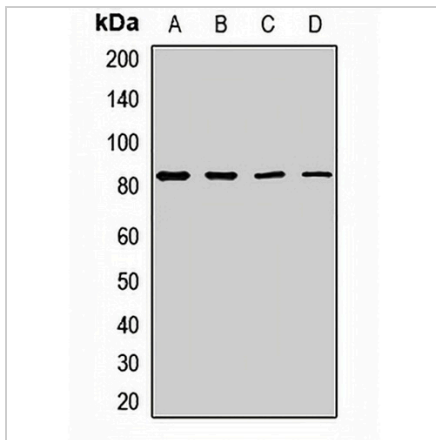
Description	Rabbit polyclonal antibody to Sec10
Specificity	Recognizes endogenous levels of Sec10 protein.
Antibody Type	Primary antibody
Immunogen	Recombinant fusion protein of human Sec10
Purification	The antibody was purified by immunogen affinity chromatography.
Molecular Weight	Predicted: 81 kD; Observed: 82 kD
Form/Buffer	Liquid in 0.42% Potassium phosphate, 0.87% Sodium chloride, pH 7.3, 30% glycerol, and 0.01% sodium azide.
Alternative Names	SEC10; SEC10L1; Exocyst complex component 5; Exocyst complex component Sec10; hSec10
Gene Symbol	EXOC5
Entrez Gene	10640(Human); 105504(Mouse); 60627(Rat)
SwissProt	O00471(Human); Q3TPX4(Mouse); P97878(Rat)

*AREX continuously optimizes our products. Webpage content may not reflect the latest updates. For inquiries, please contact info@arexbio.com or your local distributor.

*Clone Number, Reactivity, Source/Host and Clonality can be found in the product name and Key Features section above.

DATASHEET**Sec10 Rabbit Polyclonal Antibody**

CAT. NO. APA14877

DATA

Western blot analysis of Sec10 expression in Hela (A), MCF7 (B), mouse lung (C), rat brain (D) whole cell lysates. (Predicted band size: 81 kD; Observed band size: 82 kD)

STORAGE

Store at 4°C short term. For long term storage, store at -20°C, avoiding freeze/thaw cycles.

NOTE

For Research Use Only. Not for diagnostic, therapeutics, prophylactic or in vivo use.