

## DATASHEET

# CPSF2 Rabbit Polyclonal Antibody

CAT. NO. APA14879

### KEY FEATURES

Target	CPSF2	Source / Host	Rabbit
Reactivity	Human, Mouse, Rat	Clonality	Polyclonal
Applications	WB	Conjugation	Unconjugated
Form / Buffer	Liquid in 0.42% Potassium phosphate, 0.87% Sodium chloride, pH 7.3, 30% glycerol, and 0.01% sodium azide.		Storage at -20°C

### BACKGROUND

Component of the cleavage and polyadenylation specificity factor (CPSF) complex that play a key role in pre-mRNA 3'-end formation, recognizing the AAUAAA signal sequence and interacting with poly(A) polymerase and other factors to bring about cleavage and poly(A) addition. Involved in the histone 3' end pre-mRNA processing.

### APPLICATION

To ensure optimal assay performance, AREX recommends conducting reagent titration tailored to each testing system for optimal detection results.

WB	1:500 - 1:2000
----	----------------

\*Results are sample-specific. Please refer to your local assay conditions and test parameters for reference.

### PRODUCT OVERVIEW

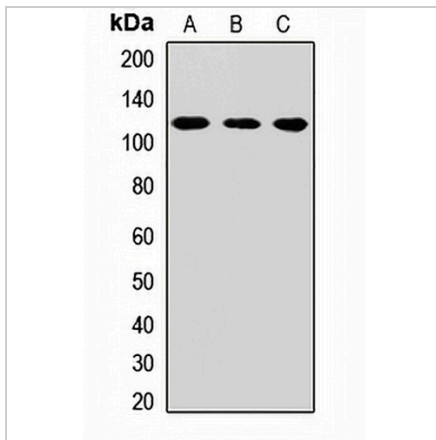
Description	Rabbit polyclonal antibody to CPSF2
Specificity	Recognizes endogenous levels of CPSF2 protein.
Antibody Type	Primary antibody
Immunogen	Recombinant fusion protein of human CPSF2
Purification	The antibody was purified by immunogen affinity chromatography.
Molecular Weight	Predicted: 88 kD; Observed: 110 kD
Form/Buffer	Liquid in 0.42% Potassium phosphate, 0.87% Sodium chloride, pH 7.3, 30% glycerol, and 0.01% sodium azide.
Alternative Names	CPSF100; KIAA1367; Cleavage and polyadenylation specificity factor subunit 2; Cleavage and polyadenylation specificity factor 100 kDa subunit; CPSF 100 kDa subunit
Gene Symbol	CPSF2
Entrez Gene	53981(Human); 51786(Mouse)
SwissProt	Q9P2I0(Human); O35218(Mouse)

\*AREX continuously optimizes our products. Webpage content may not reflect the latest updates. For inquiries, please contact [info@arexbio.com](mailto:info@arexbio.com) or your local distributor.

\*Clone Number, Reactivity, Source/Host and Clonality can be found in the product name and Key Features section above.

**DATASHEET****CPSF2 Rabbit Polyclonal Antibody**

CAT. NO. APA14879

**DATA**

Western blot analysis of CPSF2 expression in Hela (A), mouse liver (B), rat kidney (C) whole cell lysates. (Predicted band size: 88 kD; Observed band size: 110 kD)

**STORAGE**

Store at 4°C short term. For long term storage, store at -20°C, avoiding freeze/thaw cycles.

**NOTE**

For Research Use Only. Not for diagnostic, therapeutics, prophylactic or in vivo use.