

**DATASHEET**

**Gamma-C-crystallin Rabbit Polyclonal Antibody**

CAT. NO. APA14880

**KEY FEATURES**

Target	Gamma-C-crystallin	Source / Host	Rabbit
Reactivity	Human, Mouse, Rat	Clonality	Polyclonal
Applications	WB	Conjugation	Unconjugated
Form / Buffer	Liquid in 0.42% Potassium phosphate, 0.87% Sodium chloride, pH 7.3, 30% glycerol, and 0.01% sodium azide.		Storage at -20°C

**BACKGROUND**

Crystallins are the dominant structural components of the vertebrate eye lens.

**APPLICATION**

To ensure optimal assay performance, AREX recommends conducting reagent titration tailored to each testing system for optimal detection results.

WB	1:500 - 1:2000
----	----------------

\*Results are sample-specific. Please refer to your local assay conditions and test parameters for reference.

**PRODUCT OVERVIEW**

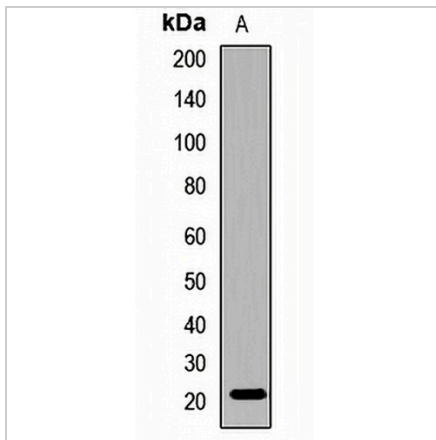
Description	Rabbit polyclonal antibody to Gamma-C-crystallin
Specificity	Recognizes endogenous levels of Gamma-C-crystallin protein.
Antibody Type	Primary antibody
Immunogen	Recombinant fusion protein of human Gamma-C-crystallin
Purification	The antibody was purified by immunogen affinity chromatography.
Molecular Weight	Predicted: 20 kD; Observed: 17 kD
Form/Buffer	Liquid in 0.42% Potassium phosphate, 0.87% Sodium chloride, pH 7.3, 30% glycerol, and 0.01% sodium azide.
Alternative Names	CRYG3; Gamma-crystallin C; Gamma-C-crystallin; Gamma-crystallin 2-1; Gamma-crystallin 3
Gene Symbol	CRYGC
Entrez Gene	1420(Human)
SwissProt	P07315(Human)

\*AREX continuously optimizes our products. Webpage content may not reflect the latest updates. For inquiries, please contact [info@arexbio.com](mailto:info@arexbio.com) or your local distributor.

\*Clone Number, Reactivity, Source/Host and Clonality can be found in the product name and Key Features section above.

**DATASHEET****Gamma-C-crystallin Rabbit Polyclonal Antibody**

CAT. NO. APA14880

**DATA**

Western blot analysis of Gamma-C-crystallin expression in MCF7 (A) whole cell lysates.  
(Predicted band size: 20 kD; Observed band size: 17 kD)

**STORAGE**

Store at 4°C short term. For long term storage, store at -20°C, avoiding freeze/thaw cycles.

**NOTE**

For Research Use Only. Not for diagnostic, therapeutics, prophylactic or in vivo use.