

DATASHEET

LINGO1 Rabbit Polyclonal Antibody

CAT. NO. APA14883

KEY FEATURES

Target	LINGO1	Source / Host	Rabbit
Reactivity	Human	Clonality	Polyclonal
Applications	WB	Conjugation	Unconjugated
Form / Buffer	Liquid in 0.42% Potassium phosphate, 0.87% Sodium chloride, pH 7.3, 30% glycerol, and 0.01% sodium azide.		Storage at -20°C

BACKGROUND

Functional component of the Nogo receptor signaling complex (RTN4R/NGFR) in RhoA activation responsible for some inhibition of axonal regeneration by myelin-associated factors in RhoA activation responsible for some inhibition of axonal regeneration by myelin-associated factors . Is also an important negative regulator of oligodendrocyte differentiation and axonal myelination . Acts in conjunction with RTN4 and RTN4R in regulating neuronal precursor cell motility during cortical development .

APPLICATION

To ensure optimal assay performance, AREX recommends conducting reagent titration tailored to each testing system for optimal detection results.

WB	1:500 - 1:2000
----	----------------

*Results are sample-specific. Please refer to your local assay conditions and test parameters for reference.

PRODUCT OVERVIEW

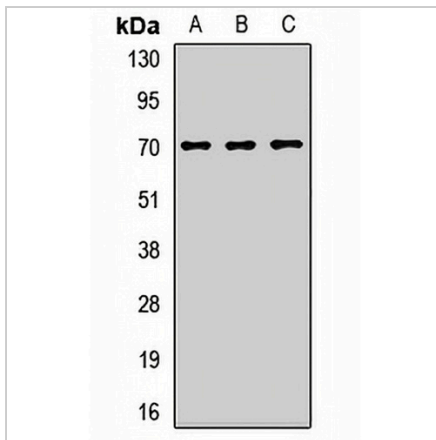
Description	Rabbit polyclonal antibody to LINGO1
Specificity	Recognizes endogenous levels of LINGO1 protein.
Antibody Type	Primary antibody
Immunogen	Recombinant fusion protein of human LINGO1
Purification	The antibody was purified by immunogen affinity chromatography.
Molecular Weight	Predicted: 69 kD; Observed: 70 kD
Form/Buffer	Liquid in 0.42% Potassium phosphate, 0.87% Sodium chloride, pH 7.3, 30% glycerol, and 0.01% sodium azide.
Alternative Names	LERN1; LRRN6A; Leucine-rich repeat and immunoglobulin-like domain-containing nogo receptor-interacting protein 1; Leucine-rich repeat and immunoglobulin domain-containing protein 1; Leucine-rich repeat neuronal protein 1; Leucine-rich repeat neuronal protein 6A
Gene Symbol	LINGO1
Entrez Gene	84894(Human); 235402(Mouse)
SwissProt	Q96FE5(Human); Q9D1T0(Mouse)

*AREX continuously optimizes our products. Webpage content may not reflect the latest updates. For inquiries, please contact info@arexbio.com or your local distributor.

*Clone Number, Reactivity, Source/Host and Clonality can be found in the product name and Key Features section above.

DATASHEET**LINGO1 Rabbit Polyclonal Antibody**

CAT. NO. APA14883

DATA

Western blot analysis of LINGO1 expression in MCF7 (A), A549 (B), mouse lung (C) whole cell lysates. (Predicted band size: 69 kD; Observed band size: 70 kD)

STORAGE

Store at 4°C short term. For long term storage, store at -20°C, avoiding freeze/thaw cycles.

NOTE

For Research Use Only. Not for diagnostic, therapeutics, prophylactic or in vivo use.