

DATASHEET

Desmoglein 2 Rabbit Polyclonal Antibody

CAT. NO. APA14885

KEY FEATURES

Target	Desmoglein 2	Source / Host	Rabbit
Reactivity	Human, Mouse, Rat	Clonality	Polyclonal
Applications	WB	Conjugation	Unconjugated
Form / Buffer	Liquid in 0.42% Potassium phosphate, 0.87% Sodium chloride, pH 7.3, 30% glycerol, and 0.01% sodium azide.		Storage at -20°C

BACKGROUND

A component of desmosome cell-cell junctions which are required for positive regulation of cellular adhesion . Involved in the interaction of plaque proteins and intermediate filaments mediating cell-cell adhesion. Required for proliferation and viability of embryonic stem cells in the blastocyst, thereby crucial for progression of post-implantation embryonic development . Maintains pluripotency by regulating epithelial to mesenchymal transition/mesenchymal to epithelial transition (EMT/MET) via interacting with and sequestering CTNNB1 to sites of cell-cell contact, thereby reducing translocation of CTNNB1 to the nucleus and subsequent transcription of CTNNB1/TCF-target genes . Promotes pluripotency and the multi-lineage differentiation potential of hematopoietic stem cells .

APPLICATION

To ensure optimal assay performance, AREX recommends conducting reagent titration tailored to each testing system for optimal detection results.

WB	1:500 - 1:2000
----	----------------

*Results are sample-specific. Please refer to your local assay conditions and test parameters for reference.

PRODUCT OVERVIEW

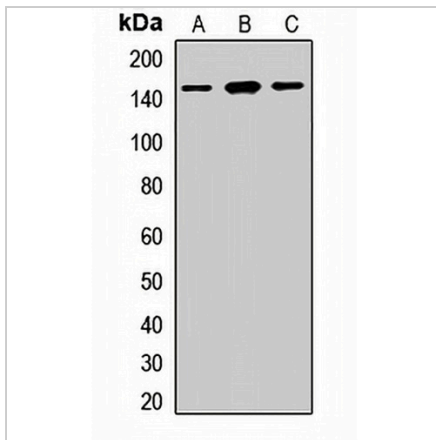
Description	Rabbit polyclonal antibody to Desmoglein 2
Specificity	Recognizes endogenous levels of Desmoglein 2 protein.
Antibody Type	Primary antibody
Immunogen	Recombinant fusion protein of human Desmoglein 2
Purification	The antibody was purified by immunogen affinity chromatography.
Molecular Weight	Predicted: 122 kD; Observed: 150 kD
Form/Buffer	Liquid in 0.42% Potassium phosphate, 0.87% Sodium chloride, pH 7.3, 30% glycerol, and 0.01% sodium azide.
Alternative Names	CDHF5; Desmoglein-2; Cadherin family member 5; HDGC
Gene Symbol	DSG2
Entrez Gene	1829(Human)
SwissProt	Q14126(Human)

*AREX continuously optimizes our products. Webpage content may not reflect the latest updates. For inquiries, please contact info@arexbio.com or your local distributor.

*Clone Number, Reactivity, Source/Host and Clonality can be found in the product name and Key Features section above.

DATASHEET**Desmoglein 2 Rabbit Polyclonal Antibody**

CAT. NO. APA14885

DATA

Western blot analysis of Desmoglein 2 expression in HepG2 (A), HeLa (B), K562 (C) whole cell lysates. (Predicted band size: 122 kD; Observed band size: 150 kD)

STORAGE

Store at 4°C short term. For long term storage, store at -20°C, avoiding freeze/thaw cycles.

NOTE

For Research Use Only. Not for diagnostic, therapeutics, prophylactic or in vivo use.