

**DATASHEET**

**FTCD Rabbit Polyclonal Antibody**

CAT. NO. APA14886

**KEY FEATURES**

Target	FTCD	Source / Host	Rabbit
Reactivity	Human, Mouse, Rat	Clonality	Polyclonal
Applications	WB	Conjugation	Unconjugated
Form / Buffer	Liquid in 0.42% Potassium phosphate, 0.87% Sodium chloride, pH 7.3, 30% glycerol, and 0.01% sodium azide.		Storage at -20°C

**BACKGROUND**

Folate-dependent enzyme, that displays both transferase and deaminase activity. Serves to channel one-carbon units from formiminoglutamate to the folate pool.

**APPLICATION**

To ensure optimal assay performance, AREX recommends conducting reagent titration tailored to each testing system for optimal detection results.

WB	1:500 - 1:2000
----	----------------

\*Results are sample-specific. Please refer to your local assay conditions and test parameters for reference.

**PRODUCT OVERVIEW**

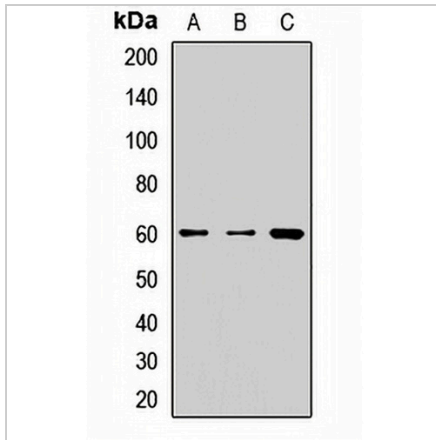
Description	Rabbit polyclonal antibody to FTCD
Specificity	Recognizes endogenous levels of FTCD protein.
Antibody Type	Primary antibody
Immunogen	Recombinant fusion protein of human FTCD
Purification	The antibody was purified by immunogen affinity chromatography.
Molecular Weight	Predicted: 16; Observed: 59 kD
Form/Buffer	Liquid in 0.42% Potassium phosphate, 0.87% Sodium chloride, pH 7.3, 30% glycerol, and 0.01% sodium azide.
Alternative Names	Formimidoyltransferase-cyclodeaminase; Formiminotransferase-cyclodeaminase; FTCD; LCHC1
Gene Symbol	FTCD
Entrez Gene	10841(Human); 14317(Mouse); 89833(Rat)
SwissProt	O95954(Human); Q91XD4(Mouse); O88618(Rat)

\*AREX continuously optimizes our products. Webpage content may not reflect the latest updates. For inquiries, please contact [info@arexbio.com](mailto:info@arexbio.com) or your local distributor.

\*Clone Number, Reactivity, Source/Host and Clonality can be found in the product name and Key Features section above.

**DATASHEET****FTCD Rabbit Polyclonal Antibody**

CAT. NO. APA14886

**DATA**

Western blot analysis of FTCD expression in LO2 (A), mouse liver (B), rat kidney (C) whole cell lysates. (Predicted band size: 16; 52; 58; 61 kD; Observed band size: 59 kD)

**STORAGE**

Store at 4°C short term. For long term storage, store at -20°C, avoiding freeze/thaw cycles.

**NOTE**

For Research Use Only. Not for diagnostic, therapeutics, prophylactic or in vivo use.