

DATASHEET

IMPDH1 Rabbit Polyclonal Antibody

CAT. NO. APA14888

KEY FEATURES

Target	IMPDH1	Source / Host	Rabbit
Reactivity	Human, Mouse, Rat	Clonality	Polyclonal
Applications	WB, IF/ICC	Conjugation	Unconjugated
Form / Buffer	Liquid in 0.42% Potassium phosphate, 0.87% Sodium chloride, pH 7.3, 30% glycerol, and 0.01% sodium azide.		Storage at -20°C

BACKGROUND

Catalyzes the conversion of inosine 5'-phosphate (IMP) to xanthosine 5'-phosphate (XMP), the first committed and rate-limiting step in the de novo synthesis of guanine nucleotides, and therefore plays an important role in the regulation of cell growth. Could also have a single-stranded nucleic acid-binding activity and could play a role in RNA and/or DNA metabolism. It may also have a role in the development of malignancy and the growth progression of some tumors.

APPLICATION

To ensure optimal assay performance, AREX recommends conducting reagent titration tailored to each testing system for optimal detection results.

WB	1:500 - 1:2000
IF/ICC	1:50 - 1:200

*Results are sample-specific. Please refer to your local assay conditions and test parameters for reference.

PRODUCT OVERVIEW

Description	Rabbit polyclonal antibody to IMPDH1
Specificity	Recognizes endogenous levels of IMPDH1 protein.
Antibody Type	Primary antibody
Immunogen	Recombinant fusion protein of human IMPDH1
Purification	The antibody was purified by immunogen affinity chromatography.
Molecular Weight	Predicted: 52; Observed: 55 kD
Form/Buffer	Liquid in 0.42% Potassium phosphate, 0.87% Sodium chloride, pH 7.3, 30% glycerol, and 0.01% sodium azide.
Alternative Names	IMPD1; Inosine-5'-monophosphate dehydrogenase 1; IMP dehydrogenase 1; IMPD 1; IMPDH 1; IMPDH-I
Gene Symbol	IMPDH1
Entrez Gene	3614(Human); 23917(Mouse)
SwissProt	P20839(Human); P50096(Mouse); D3ZLZ7(Rat)

*AREX continuously optimizes our products. Webpage content may not reflect the latest updates. For inquiries, please contact info@arex.bio or your local distributor.

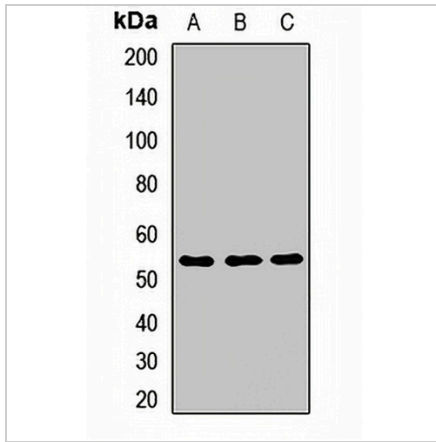
*Clone Number, Reactivity, Source/Host and Clonality can be found in the product name and Key Features section above.

DATASHEET

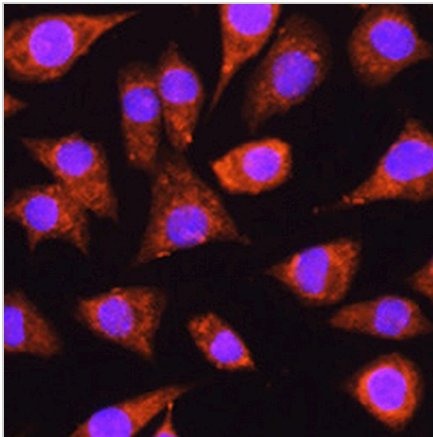
IMPDH1 Rabbit Polyclonal Antibody

CAT. NO. APA14888

DATA



Western blot analysis of IMPDH1 expression in HT29 (A), mouse brain (B), mouse lung (C) whole cell lysates. (Predicted band size: 52; 54; 55; 60; 63; 64 kD; Observed band size: 55 kD)



Immunofluorescent analysis of IMPDH1 staining in L929 cells. Formalin-fixed cells were permeabilized with 0.1% Triton X-100 in TBS for 5-10 minutes and blocked with 3% BSA-PBS for 30 minutes at room temperature. Cells were probed with the primary antibody in 3% BSA-PBS and incubated overnight at 4 °C in a humidified chamber. Cells were washed with PBST and incubated with a AREX® Fluor 594-conjugated secondary antibody (red) in PBS at room temperature in the dark. DAPI was used to stain the cell nuclei (blue).

STORAGE

Store at 4°C short term. For long term storage, store at -20°C, avoiding freeze/thaw cycles.

NOTE

For Research Use Only. Not for diagnostic, therapeutics, prophylactic or in vivo use.