

DATASHEET

WDR33 Rabbit Polyclonal Antibody

CAT. NO. APA14889

KEY FEATURES

Target	WDR33	Source / Host	Rabbit
Reactivity	Human, Mouse, Rat	Clonality	Polyclonal
Applications	WB	Conjugation	Unconjugated
Form / Buffer	Liquid in 0.42% Potassium phosphate, 0.87% Sodium chloride, pH 7.3, 30% glycerol, and 0.01% sodium azide.		Storage at -20°C

BACKGROUND

Essential for both cleavage and polyadenylation of pre-mRNA 3' ends.

APPLICATION

To ensure optimal assay performance, AREX recommends conducting reagent titration tailored to each testing system for optimal detection results.

WB	1:500 - 1:2000
----	----------------

*Results are sample-specific. Please refer to your local assay conditions and test parameters for reference.

PRODUCT OVERVIEW

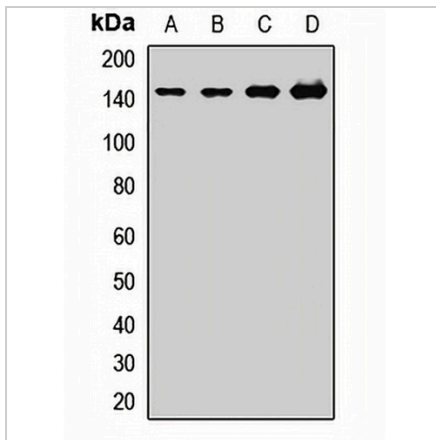
Description	Rabbit polyclonal antibody to WDR33
Specificity	Recognizes endogenous levels of WDR33 protein.
Antibody Type	Primary antibody
Immunogen	Recombinant fusion protein of human WDR33
Purification	The antibody was purified by immunogen affinity chromatography.
Molecular Weight	Predicted: 30; Observed: 170 kD
Form/Buffer	Liquid in 0.42% Potassium phosphate, 0.87% Sodium chloride, pH 7.3, 30% glycerol, and 0.01% sodium azide.
Alternative Names	WDC146; pre-mRNA 3' end processing protein WDR33; WD repeat-containing protein 33; WD repeat-containing protein WDC146
Gene Symbol	WDR33
Entrez Gene	55339(Human); 74320(Mouse)
SwissProt	Q9C0J8(Human); Q8K4P0(Mouse)

*AREX continuously optimizes our products. Webpage content may not reflect the latest updates. For inquiries, please contact info@arexbio.com or your local distributor.

*Clone Number, Reactivity, Source/Host and Clonality can be found in the product name and Key Features section above.

DATASHEET**WDR33 Rabbit Polyclonal Antibody**

CAT. NO. APA14889

DATA

Western blot analysis of WDR33 expression in HepG2 (A), MCF7 (B), mouse testis (C), rat testis (D) whole cell lysates. (Predicted band size: 30; 38; 145 kD; Observed band size: 170 kD)

STORAGE

Store at 4°C short term. For long term storage, store at -20°C, avoiding freeze/thaw cycles.

NOTE

For Research Use Only. Not for diagnostic, therapeutics, prophylactic or in vivo use.