

DATASHEET

RNF135 Rabbit Polyclonal Antibody

CAT. NO. APA14894

KEY FEATURES

Target	RNF135	Source / Host	Rabbit
Reactivity	Human, Mouse	Clonality	Polyclonal
Applications	WB	Conjugation	Unconjugated
Form / Buffer	Liquid in 0.42% Potassium phosphate, 0.87% Sodium chloride, pH 7.3, 30% glycerol, and 0.01% sodium azide.		Storage at -20°C

BACKGROUND

E2-dependent E3 ubiquitin-protein ligase that functions as a RIGI coreceptor in the sensing of viral RNAs in cell cytoplasm and the activation of the antiviral innate immune response . Together with the UBE2D3, UBE2N and UB2V1 E2 ligases, catalyzes the 'Lys-63'-linked polyubiquitination of RIGI oligomerized on viral RNAs, an essential step in the activation of the RIG-I signaling pathway . Through a ubiquitin-independent parallel mechanism, which consists in bridging RIGI filaments forming on longer viral RNAs, further activates the RIG-I signaling pathway . This second mechanism that synergizes with the ubiquitin-dependent one would thereby allow an RNA length-dependent regulation of the RIG-I signaling pathway (Probable).

APPLICATION

To ensure optimal assay performance, AREX recommends conducting reagent titration tailored to each testing system for optimal detection results.

WB	1:500 - 1:2000
----	----------------

*Results are sample-specific. Please refer to your local assay conditions and test parameters for reference.

PRODUCT OVERVIEW

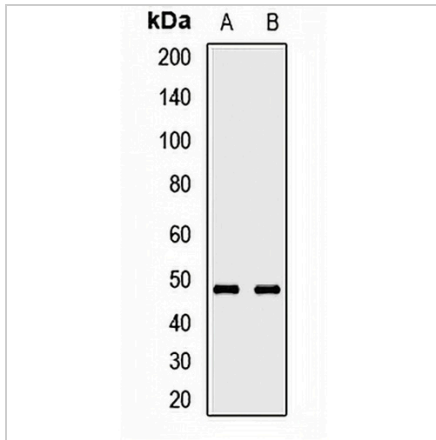
Description	Rabbit polyclonal antibody to RNF135
Specificity	Recognizes endogenous levels of RNF135 protein.
Antibody Type	Primary antibody
Immunogen	Recombinant fusion protein of human RNF135
Purification	The antibody was purified by immunogen affinity chromatography.
Molecular Weight	Predicted: 47 kD; Observed: 47 kD
Form/Buffer	Liquid in 0.42% Potassium phosphate, 0.87% Sodium chloride, pH 7.3, 30% glycerol, and 0.01% sodium azide.
Alternative Names	E3 ubiquitin-protein ligase RNF135; RIG-I E3 ubiquitin ligase; REUL; RING finger protein 135; Riplet
Gene Symbol	RNF135
Entrez Gene	84282(Human); 71956(Mouse)
SwissProt	Q8IUD6(Human); Q9CWS1(Mouse)

*AREX continuously optimizes our products. Webpage content may not reflect the latest updates. For inquiries, please contact info@arexbio.com or your local distributor.

*Clone Number, Reactivity, Source/Host and Clonality can be found in the product name and Key Features section above.

DATASHEET**RNF135 Rabbit Polyclonal Antibody**

CAT. NO. APA14894

DATA

Western blot analysis of RNF135 expression in THP1 (A), mouse kidney (B) whole cell lysates. (Predicted band size: 47 kD; Observed band size: 47 kD)

STORAGE

Store at 4°C short term. For long term storage, store at -20°C, avoiding freeze/thaw cycles.

NOTE

For Research Use Only. Not for diagnostic, therapeutics, prophylactic or in vivo use.