

**DATASHEET**

**PHOX2B Rabbit Polyclonal Antibody**

CAT. NO. APA14895

**KEY FEATURES**

Target	PHOX2B	Source / Host	Rabbit
Reactivity	Human, Mouse	Clonality	Polyclonal
Applications	WB	Conjugation	Unconjugated
Form / Buffer	Liquid in 0.42% Potassium phosphate, 0.87% Sodium chloride, pH 7.3, 30% glycerol, and 0.01% sodium azide.		Storage at-20°C

**BACKGROUND**

Involved in the development of several major noradrenergic neuron populations, including the locus coeruleus. Transcription factor which could determine a neurotransmitter phenotype in vertebrates. Enhances second-messenger-mediated activation of the dopamine beta-hydrolase and c-fos promoters, and of several enhancers including cAMP-response element and serum-response element.

**APPLICATION**

To ensure optimal assay performance, AREX recommends conducting reagent titration tailored to each testing system for optimal detection results.

WB	1:500 - 1:1000
----	----------------

\*Results are sample-specific. Please refer to your local assay conditions and test parameters for reference.

**PRODUCT OVERVIEW**

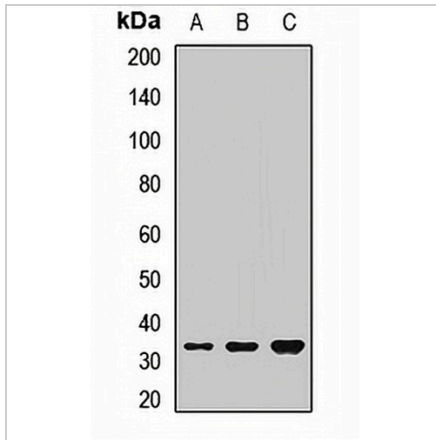
Description	Rabbit polyclonal antibody to PHOX2B
Specificity	Recognizes endogenous levels of PHOX2B protein.
Antibody Type	Primary antibody
Immunogen	Recombinant fusion protein of human PHOX2B
Purification	The antibody was purified by immunogen affinity chromatography.
Molecular Weight	Predicted: 31 kD; Observed: 35 kD
Form/Buffer	Liquid in 0.42% Potassium phosphate, 0.87% Sodium chloride, pH 7.3, 30% glycerol, and 0.01% sodium azide.
Alternative Names	PMX2B; Paired mesoderm homeobox protein 2B; Neuroblastoma Phox; NBPhox; PHOX2B homeodomain protein; Paired-like homeobox 2B
Gene Symbol	PHOX2B
Entrez Gene	8929(Human); 18935(Mouse)
SwissProt	Q99453(Human); O35690(Mouse)

\*AREX continuously optimizes our products. Webpage content may not reflect the latest updates. For inquiries, please contact [info@arexbio.com](mailto:info@arexbio.com) or your local distributor.

\*Clone Number, Reactivity, Source/Host and Clonality can be found in the product name and Key Features section above.

**DATASHEET****PHOX2B Rabbit Polyclonal Antibody**

CAT. NO. APA14895

**DATA**

Western blot analysis of PHOX2B expression in SHSY5Y (A), HeLa (B), mouse liver (C) whole cell lysates. (Predicted band size: 31 kD; Observed band size: 35 kD)

**STORAGE**

Store at 4°C short term. For long term storage, store at -20°C, avoiding freeze/thaw cycles.

**NOTE**

For Research Use Only. Not for diagnostic, therapeutics, prophylactic or in vivo use.