

DATASHEET

MTERFD1 Rabbit Polyclonal Antibody

CAT. NO. APA14899

KEY FEATURES

Target	MTERFD1	Source / Host	Rabbit
Reactivity	Human, Mouse, Rat	Clonality	Polyclonal
Applications	WB, IF/ICC	Conjugation	Unconjugated
Form / Buffer	Liquid in 0.42% Potassium phosphate, 0.87% Sodium chloride, pH 7.3, 30% glycerol, and 0.01% sodium azide.		Storage at -20°C

BACKGROUND

Binds promoter DNA and regulates initiation of transcription . Required for normal mitochondrial transcription and translation, and for normal assembly of mitochondrial respiratory complexes. Required for normal mitochondrial function . Maintains 16S rRNA levels and functions in mitochondrial ribosome assembly by regulating the biogenesis of the 39S ribosomal subunit .

APPLICATION

To ensure optimal assay performance, AREX recommends conducting reagent titration tailored to each testing system for optimal detection results.

WB	1:500 - 1:1000
IF/ICC	1:50 - 1:200

*Results are sample-specific. Please refer to your local assay conditions and test parameters for reference.

PRODUCT OVERVIEW

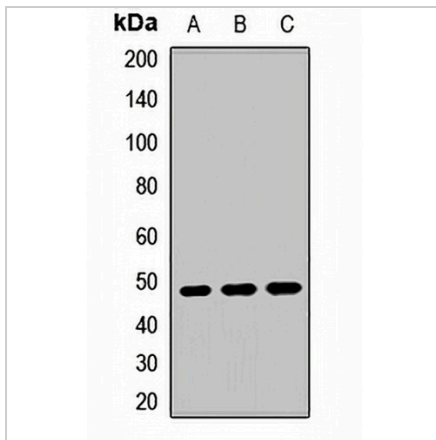
Description	Rabbit polyclonal antibody to MTERFD1
Specificity	Recognizes endogenous levels of MTERFD1 protein.
Antibody Type	Primary antibody
Immunogen	Recombinant fusion protein of human MTERFD1
Purification	The antibody was purified by immunogen affinity chromatography.
Molecular Weight	Predicted: 34; Observed: 48 kD
Form/Buffer	Liquid in 0.42% Potassium phosphate, 0.87% Sodium chloride, pH 7.3, 30% glycerol, and 0.01% sodium azide.
Alternative Names	mTERF domain-containing protein 1 mitochondrial; Mitochondrial transcription termination factor 3; mTERF3
Gene Symbol	MTERFD1
Entrez Gene	51001(Human); 66410(Mouse); 299514(Rat)
SwissProt	Q96E29(Human); Q8R3J4(Mouse); Q6P6Q6(Rat)

*AREX continuously optimizes our products. Webpage content may not reflect the latest updates. For inquiries, please contact info@arexbio.com or your local distributor.

*Clone Number, Reactivity, Source/Host and Clonality can be found in the product name and Key Features section above.

DATASHEET**MTERFD1 Rabbit Polyclonal Antibody**

CAT. NO. APA14899

DATA

Western blot analysis of MTERFD1 expression in HepG2 (A), SHSY5Y (B), SKOV3 (C) whole cell lysates. (Predicted band size: 34; 37; 47 kD; Observed band size: 48 kD)

STORAGE

Store at 4°C short term. For long term storage, store at -20°C, avoiding freeze/thaw cycles.

NOTE

For Research Use Only. Not for diagnostic, therapeutics, prophylactic or in vivo use.