

DATASHEET

CHRN2 Rabbit Polyclonal Antibody

CAT. NO. APA14902

KEY FEATURES

Target	CHRN2	Source / Host	Rabbit
Reactivity	Human, Mouse, Rat	Clonality	Polyclonal
Applications	WB	Conjugation	Unconjugated
Form / Buffer	Liquid in 0.42% Potassium phosphate, 0.87% Sodium chloride, pH 7.3, 30% glycerol, and 0.01% sodium azide.		Storage at-20°C

BACKGROUND

Component of neuronal acetylcholine receptors (nAChRs) that function as pentameric, ligand-gated cation channels with high calcium permeability among other activities. nAChRs are excitatory neurotransmitter receptors formed by a collection of nAChR subunits known to mediate synaptic transmission in the nervous system and the neuromuscular junction. Each nAChR subunit confers differential attributes to channel properties, including activation, deactivation and desensitization kinetics, pH sensitivity, cation permeability, and binding to allosteric modulators that function as pentameric, ligand-gated cation channels with high calcium permeability among other activities.

APPLICATION

To ensure optimal assay performance, AREX recommends conducting reagent titration tailored to each testing system for optimal detection results.

WB	1:500 - 1:1000
----	----------------

*Results are sample-specific. Please refer to your local assay conditions and test parameters for reference.

PRODUCT OVERVIEW

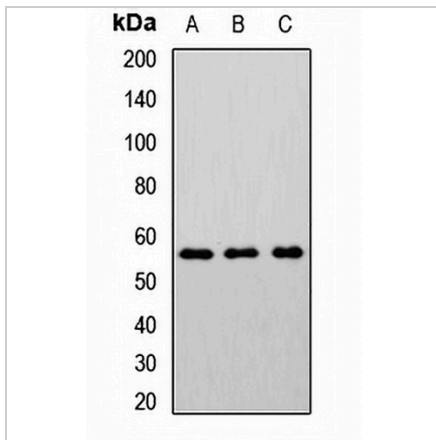
Description	Rabbit polyclonal antibody to CHRN2
Specificity	Recognizes endogenous levels of CHRN2 protein.
Antibody Type	Primary antibody
Immunogen	Recombinant fusion protein of human CHRN2
Purification	The antibody was purified by immunogen affinity chromatography.
Molecular Weight	Predicted: 57 kD; Observed: 50-52 kD
Form/Buffer	Liquid in 0.42% Potassium phosphate, 0.87% Sodium chloride, pH 7.3, 30% glycerol, and 0.01% sodium azide.
Alternative Names	Neuronal acetylcholine receptor subunit beta-2
Gene Symbol	CHRN2
Entrez Gene	1141(Human); 11444(Mouse)
SwissProt	P17787(Human); Q9ERK7(Mouse)

*AREX continuously optimizes our products. Webpage content may not reflect the latest updates. For inquiries, please contact info@arexbio.com or your local distributor.

*Clone Number, Reactivity, Source/Host and Clonality can be found in the product name and Key Features section above.

DATASHEET**CHRN2 Rabbit Polyclonal Antibody**

CAT. NO. APA14902

DATA

Western blot analysis of CHRN2 expression in A549 (A), mouse brain (B), mouse lung (C) whole cell lysates. (Predicted band size: 57 kD; Observed band size: 50-52 kD)

STORAGE

Store at 4°C short term. For long term storage, store at -20°C, avoiding freeze/thaw cycles.

NOTE

For Research Use Only. Not for diagnostic, therapeutics, prophylactic or in vivo use.