

**DATASHEET**

**NDUFA6 Rabbit Polyclonal Antibody**

CAT. NO. APA14910

**KEY FEATURES**

Target	NDUFA6	Source / Host	Rabbit
Reactivity	Human, Mouse, Rat	Clonality	Polyclonal
Applications	WB	Conjugation	Unconjugated
Form / Buffer	Liquid in 0.42% Potassium phosphate, 0.87% Sodium chloride, pH 7.3, 30% glycerol, and 0.01% sodium azide.		Storage at -20°C

**BACKGROUND**

Accessory subunit of the mitochondrial membrane respiratory chain NADH dehydrogenase (Complex I), that is believed to be not involved in catalysis. Required for proper complex I assembly, that is believed to be not involved in catalysis. Required for proper complex I assembly. Complex I functions in the transfer of electrons from NADH to the respiratory chain. The immediate electron acceptor for the enzyme is believed to be ubiquinone.

**APPLICATION**

To ensure optimal assay performance, AREX recommends conducting reagent titration tailored to each testing system for optimal detection results.

WB	1:500 - 1:1000
----	----------------

\*Results are sample-specific. Please refer to your local assay conditions and test parameters for reference.

**PRODUCT OVERVIEW**

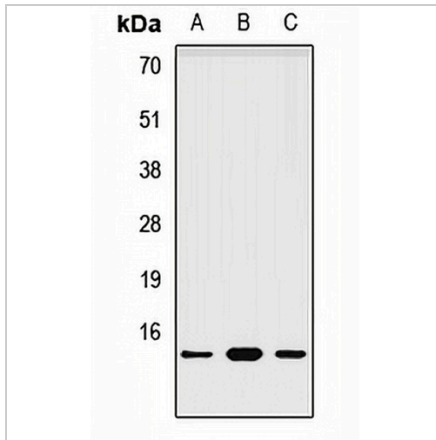
Description	Rabbit polyclonal antibody to NDUFA6
Specificity	Recognizes endogenous levels of NDUFA6 protein.
Antibody Type	Primary antibody
Immunogen	Recombinant fusion protein of human NDUFA6
Purification	The antibody was purified by immunogen affinity chromatography.
Molecular Weight	Predicted: 17 kD; Observed: 13 kD
Form/Buffer	Liquid in 0.42% Potassium phosphate, 0.87% Sodium chloride, pH 7.3, 30% glycerol, and 0.01% sodium azide.
Alternative Names	LYRM6; NADHB14; NADH dehydrogenase [ubiquinone] 1 alpha subcomplex subunit 6; Complex I-B14; CI-B14; LYR motif-containing protein 6; NADH-ubiquinone oxidoreductase B14 subunit
Gene Symbol	NDUFA6
Entrez Gene	4700(Human); 67130(Mouse)
SwissProt	P56556(Human); Q9CQZ5(Mouse)

\*AREX continuously optimizes our products. Webpage content may not reflect the latest updates. For inquiries, please contact [info@arexbio.com](mailto:info@arexbio.com) or your local distributor.

\*Clone Number, Reactivity, Source/Host and Clonality can be found in the product name and Key Features section above.

**DATASHEET****NDUFA6 Rabbit Polyclonal Antibody**

CAT. NO. APA14910

**DATA**

Western blot analysis of NDUFA6 expression in HepG2 (A), mouse heart (B), rat kidney (C) whole cell lysates. (Predicted band size: 17 kD; Observed band size: 13 kD)

**STORAGE**

Store at 4°C short term. For long term storage, store at -20°C, avoiding freeze/thaw cycles.

**NOTE**

For Research Use Only. Not for diagnostic, therapeutics, prophylactic or in vivo use.