

**DATASHEET**

**Cyclophilin C Rabbit Polyclonal Antibody**

CAT. NO. APA14912

**KEY FEATURES**

Target	Cyclophilin C	Source / Host	Rabbit
Reactivity	Human, Mouse	Clonality	Polyclonal
Applications	WB	Conjugation	Unconjugated
Form / Buffer	Liquid in 0.42% Potassium phosphate, 0.87% Sodium chloride, pH 7.3, 30% glycerol, and 0.01% sodium azide.		Storage at -20°C

**BACKGROUND**

PPIase that catalyzes the cis-trans isomerization of proline imidic peptide bonds in oligopeptides and may therefore assist protein folding.

**APPLICATION**

To ensure optimal assay performance, AREX recommends conducting reagent titration tailored to each testing system for optimal detection results.

WB	1:500 - 1:1000
----	----------------

\*Results are sample-specific. Please refer to your local assay conditions and test parameters for reference.

**PRODUCT OVERVIEW**

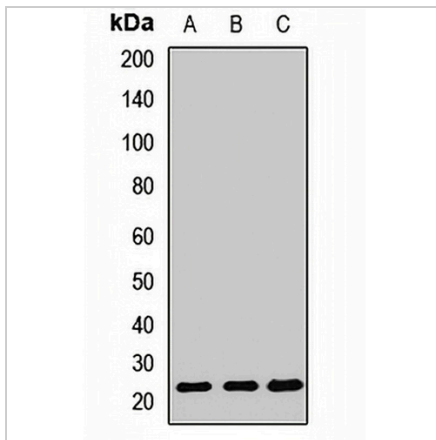
Description	Rabbit polyclonal antibody to Cyclophilin C
Specificity	Recognizes endogenous levels of Cyclophilin C protein.
Antibody Type	Primary antibody
Immunogen	Recombinant fusion protein of human Cyclophilin C
Purification	The antibody was purified by immunogen affinity chromatography.
Molecular Weight	Predicted: 22 kD; Observed: 23 kD
Form/Buffer	Liquid in 0.42% Potassium phosphate, 0.87% Sodium chloride, pH 7.3, 30% glycerol, and 0.01% sodium azide.
Alternative Names	CYPC; Peptidyl-prolyl cis-trans isomerase C; PPIase C; Cyclophilin C; Rotamase C
Gene Symbol	PPIC
Entrez Gene	5480(Human); 19038(Mouse)
SwissProt	P45877(Human); P30412(Mouse)

\*AREX continuously optimizes our products. Webpage content may not reflect the latest updates. For inquiries, please contact [info@arexbio.com](mailto:info@arexbio.com) or your local distributor.

\*Clone Number, Reactivity, Source/Host and Clonality can be found in the product name and Key Features section above.

**DATASHEET****Cyclophilin C Rabbit Polyclonal Antibody**

CAT. NO. APA14912

**DATA**

Western blot analysis of Cyclophilin C expression in HeLa (A), MCF7 (B), HepG2 (C) whole cell lysates. (Predicted band size: 22 kD; Observed band size: 23 kD)

**STORAGE**

Store at 4°C short term. For long term storage, store at -20°C, avoiding freeze/thaw cycles.

**NOTE**

For Research Use Only. Not for diagnostic, therapeutics, prophylactic or in vivo use.