

DATASHEET

RNase L Rabbit Polyclonal Antibody

CAT. NO. APA14914

KEY FEATURES

Target	RNase L	Source / Host	Rabbit
Reactivity	Human, Mouse	Clonality	Polyclonal
Applications	WB	Conjugation	Unconjugated
Form / Buffer	Liquid in 0.42% Potassium phosphate, 0.87% Sodium chloride, pH 7.3, 30% glycerol, and 0.01% sodium azide.		Storage at-20°C

BACKGROUND

Endoribonuclease that functions in the interferon (IFN) antiviral response . In INF treated and virus infected cells, RNASEL probably mediates its antiviral effects through a combination of direct cleavage of single-stranded viral RNAs, inhibition of protein synthesis through the degradation of rRNA, induction of apoptosis, and induction of other antiviral genes . RNASEL mediated apoptosis is the result of a JNK-dependent stress-response pathway leading to cytochrome c release from mitochondria and caspase-dependent apoptosis . Therefore, activation of RNASEL could lead to elimination of virus infected cells under some circumstances .

APPLICATION

To ensure optimal assay performance, AREX recommends conducting reagent titration tailored to each testing system for optimal detection results.

WB	1:500 - 1:1000
----	----------------

*Results are sample-specific. Please refer to your local assay conditions and test parameters for reference.

PRODUCT OVERVIEW

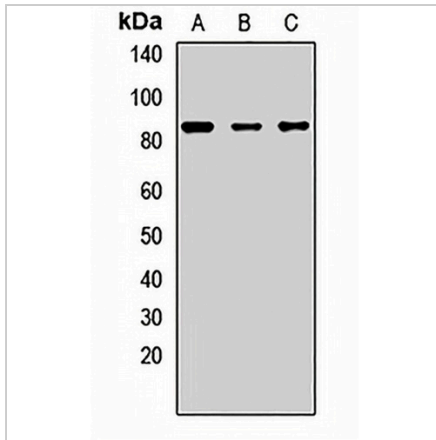
Description	Rabbit polyclonal antibody to RNase L
Specificity	Recognizes endogenous levels of RNase L protein.
Antibody Type	Primary antibody
Immunogen	Recombinant fusion protein of human RNase L
Purification	The antibody was purified by immunogen affinity chromatography.
Molecular Weight	Predicted: 73; Observed: 84 kD
Form/Buffer	Liquid in 0.42% Potassium phosphate, 0.87% Sodium chloride, pH 7.3, 30% glycerol, and 0.01% sodium azide.
Alternative Names	RNS4; 2-5A-dependent ribonuclease; 2-5A-dependent RNase; Ribonuclease 4; Ribonuclease L; RNase L
Gene Symbol	RNASEL
Entrez Gene	6041(Human); 24014(Mouse)
SwissProt	Q05823(Human); Q05921(Mouse)

*AREX continuously optimizes our products. Webpage content may not reflect the latest updates. For inquiries, please contact info@arexbio.com or your local distributor.

*Clone Number, Reactivity, Source/Host and Clonality can be found in the product name and Key Features section above.

DATASHEET**RNase L Rabbit Polyclonal Antibody**

CAT. NO. APA14914

DATA

Western blot analysis of RNase L expression in Jurkat (A), mouse spleen (B), mouse kidney (C) whole cell lysates. (Predicted band size: 73; 83 kD; Observed band size: 84 kD)

STORAGE

Store at 4°C short term. For long term storage, store at -20°C, avoiding freeze/thaw cycles.

NOTE

For Research Use Only. Not for diagnostic, therapeutics, prophylactic or in vivo use.