

**DATASHEET**

**BAZ1B Rabbit Polyclonal Antibody**

CAT. NO. APA14918

**KEY FEATURES**

Target	BAZ1B	Source / Host	Rabbit
Reactivity	Human, Mouse, Rat	Clonality	Polyclonal
Applications	WB, IHC	Conjugation	Unconjugated
Form / Buffer	Liquid in 0.42% Potassium phosphate, 0.87% Sodium chloride, pH 7.3, 30% glycerol, and 0.01% sodium azide.		Storage at -20°C

**BACKGROUND**

Atypical tyrosine-protein kinase that plays a central role in chromatin remodeling and acts as a transcription regulator . Involved in DNA damage response by phosphorylating 'Tyr-142' of histone H2AX (H2AXY142ph) . H2AXY142ph plays a central role in DNA repair and acts as a mark that distinguishes between apoptotic and repair responses to genotoxic stress . Regulatory subunit of the ATP-dependent WICH-1 and WICH-5 ISWI chromatin remodeling complexes, which form ordered nucleosome arrays on chromatin and facilitate access to DNA during DNA-templated processes such as DNA replication, transcription, and repair . Both complexes regulate the spacing of nucleosomes along the chromatin and have the ability to slide mononucleosomes to the center of a DNA template .

**APPLICATION**

To ensure optimal assay performance, AREX recommends conducting reagent titration tailored to each testing system for optimal detection results.

WB	1:500 - 1:1000
IHC	1:50 - 1:200

\*Results are sample-specific. Please refer to your local assay conditions and test parameters for reference.

**PRODUCT OVERVIEW**

Description	Rabbit polyclonal antibody to BAZ1B
Specificity	Recognizes endogenous levels of BAZ1B protein.
Antibody Type	Primary antibody
Immunogen	Recombinant fusion protein of human BAZ1B
Purification	The antibody was purified by immunogen affinity chromatography.
Molecular Weight	Predicted: 170 kD; Observed: 190 kD
Form/Buffer	Liquid in 0.42% Potassium phosphate, 0.87% Sodium chloride, pH 7.3, 30% glycerol, and 0.01% sodium azide.
Alternative Names	WBSC10; WBSCR10; WBSCR9; WSTF; Tyrosine-protein kinase BAZ1B; Bromodomain adjacent to zinc finger domain protein 1B; Williams syndrome transcription factor; Williams-Beuren syndrome chromosomal region 10 protein; Williams-Beuren syndrome chromosomal region 9 protein; hWALp2
Gene Symbol	BAZ1B
Entrez Gene	9031(Human); 22385(Mouse)
SwissProt	Q9UIG0(Human); Q9Z277(Mouse)

\*AREX continuously optimizes our products. Webpage content may not reflect the latest updates. For inquiries, please contact [info@arexbio.com](mailto:info@arexbio.com) or your local distributor.

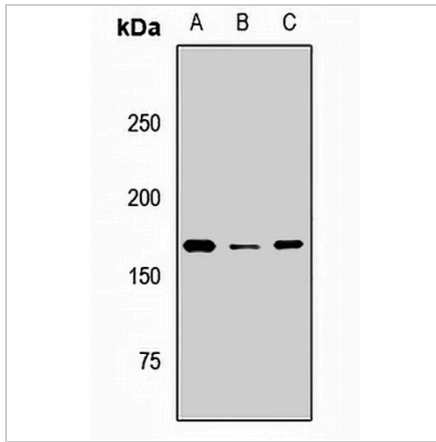
\*Clone Number, Reactivity, Source/Host and Clonality can be found in the product name and Key Features section above.

**DATASHEET**

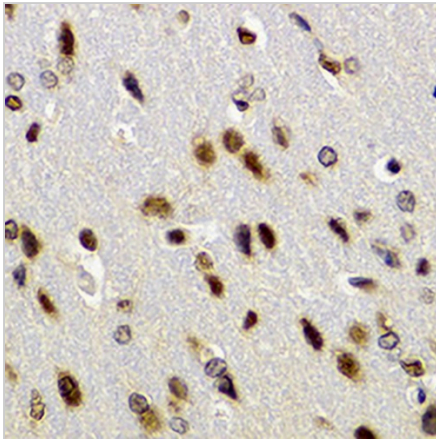
**BAZ1B Rabbit Polyclonal Antibody**

CAT. NO. APA14918

**DATA**



Western blot analysis of BAZ1B expression in HeLa (A), HepG2 (B), mouse brain (C) whole cell lysates. (Predicted band size: 170 kD; Observed band size: 190 kD)



Immunohistochemical analysis of BAZ1B staining in rat brain formalin fixed paraffin embedded tissue section. The section was pre-treated using heat mediated antigen retrieval with sodium citrate buffer (pH 6.0). The section was then incubated with the antibody at room temperature and detected using an HRP conjugated compact polymer system. DAB was used as the chromogen. The section was then counterstained with haematoxylin and mounted with DPX.

**STORAGE**

Store at 4°C short term. For long term storage, store at -20°C, avoiding freeze/thaw cycles.

**NOTE**

For Research Use Only. Not for diagnostic, therapeutics, prophylactic or in vivo use.