

**DATASHEET**

**MAD2L2 Rabbit Polyclonal Antibody**

CAT. NO. APA14923

**KEY FEATURES**

Target	MAD2L2	Source / Host	Rabbit
Reactivity	Human, Mouse, Rat	Clonality	Polyclonal
Applications	WB	Conjugation	Unconjugated
Form / Buffer	Liquid in 0.42% Potassium phosphate, 0.87% Sodium chloride, pH 7.3, 30% glycerol, and 0.01% sodium azide.		Storage at-20°C

**BACKGROUND**

Adapter protein able to interact with different proteins and involved in different biological processes . Mediates the interaction between the error-prone DNA polymerase zeta catalytic subunit REV3L and the inserter polymerase REV1, thereby mediating the second polymerase switching in translesion DNA synthesis . Translesion DNA synthesis releases the replication blockade of replicative polymerases, stalled in presence of DNA lesions . Component of the shieldin complex, which plays an important role in repair of DNA double-stranded breaks (DSBs) . During G1 and S phase of the cell cycle, the complex functions downstream of TP53BP1 to promote non-homologous end joining (NHEJ) and suppress DNA end resection .

**APPLICATION**

To ensure optimal assay performance, AREX recommends conducting reagent titration tailored to each testing system for optimal detection results.

WB	1:500 - 1:1000
----	----------------

\*Results are sample-specific. Please refer to your local assay conditions and test parameters for reference.

**PRODUCT OVERVIEW**

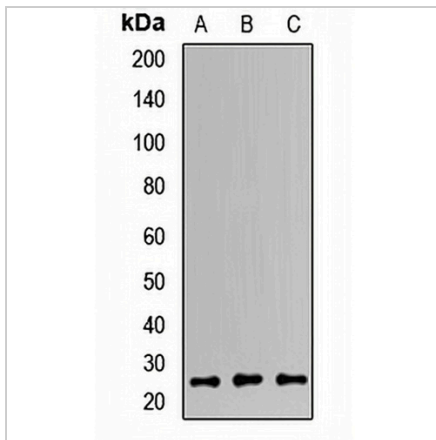
Description	Rabbit polyclonal antibody to MAD2L2
Specificity	Recognizes endogenous levels of MAD2L2 protein.
Antibody Type	Primary antibody
Immunogen	Recombinant fusion protein of human MAD2L2
Purification	The antibody was purified by immunogen affinity chromatography.
Molecular Weight	Predicted: 24 kD; Observed: 25 kD
Form/Buffer	Liquid in 0.42% Potassium phosphate, 0.87% Sodium chloride, pH 7.3, 30% glycerol, and 0.01% sodium azide.
Alternative Names	MAD2B; REV7; Mitotic spindle assembly checkpoint protein MAD2B; Mitotic arrest deficient 2-like protein 2; MAD2-like protein 2; REV7 homolog; hREV7
Gene Symbol	MAD2L2
Entrez Gene	10459(Human); 71890(Mouse); 313702(Rat)
SwissProt	Q9UI95(Human); Q9D752(Mouse); D3Z8D9(Rat)

\*AREX continuously optimizes our products. Webpage content may not reflect the latest updates. For inquiries, please contact [info@arexbio.com](mailto:info@arexbio.com) or your local distributor.

\*Clone Number, Reactivity, Source/Host and Clonality can be found in the product name and Key Features section above.

**DATASHEET****MAD2L2 Rabbit Polyclonal Antibody**

CAT. NO. APA14923

**DATA**

Western blot analysis of MAD2L2 expression in K562 (A), HeLa (B), mouse skeletal muscle (C) whole cell lysates. (Predicted band size: 24 kD; Observed band size: 25 kD)

**STORAGE**

Store at 4°C short term. For long term storage, store at -20°C, avoiding freeze/thaw cycles.

**NOTE**

For Research Use Only. Not for diagnostic, therapeutics, prophylactic or in vivo use.