

DATASHEET

BAZ1A Rabbit Polyclonal Antibody

CAT. NO. APA14926

KEY FEATURES

Target	BAZ1A	Source / Host	Rabbit
Reactivity	Human, Mouse, Rat	Clonality	Polyclonal
Applications	WB	Conjugation	Unconjugated
Form / Buffer	Liquid in 0.42% Potassium phosphate, 0.87% Sodium chloride, pH 7.3, 30% glycerol, and 0.01% sodium azide.		Storage at -20°C

BACKGROUND

Regulatory subunit of the ATP-dependent ACF-1 and ACF-5 ISWI chromatin remodeling complexes, which form ordered nucleosome arrays on chromatin and slide edge- and center-positioned histone octamers away from their original location on the DNA template to facilitate access to DNA during DNA-templated processes such as DNA replication, transcription, and repair . Both complexes regulate the spacing of nucleosomes along the chromatin and have the ability to slide mononucleosomes to the center of a DNA template in an ATP-dependent manner . The ACF-1 ISWI chromatin remodeling complex has a lower ATP hydrolysis rate than the ACF-5 ISWI chromatin remodeling complex .

APPLICATION

To ensure optimal assay performance, AREX recommends conducting reagent titration tailored to each testing system for optimal detection results.

WB	1:500 - 1:2000
----	----------------

*Results are sample-specific. Please refer to your local assay conditions and test parameters for reference.

PRODUCT OVERVIEW

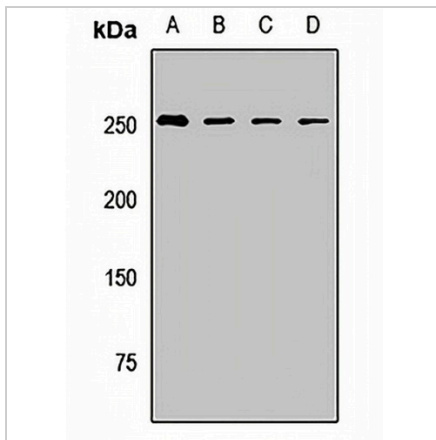
Description	Rabbit polyclonal antibody to BAZ1A
Specificity	Recognizes endogenous levels of BAZ1A protein.
Antibody Type	Primary antibody
Immunogen	Recombinant fusion protein of human BAZ1A
Purification	The antibody was purified by immunogen affinity chromatography.
Molecular Weight	Predicted: 175; Observed: 250 kD
Form/Buffer	Liquid in 0.42% Potassium phosphate, 0.87% Sodium chloride, pH 7.3, 30% glycerol, and 0.01% sodium azide.
Alternative Names	ACF1; WCRF180; Bromodomain adjacent to zinc finger domain protein 1A; ATP-dependent chromatin-remodeling protein; ATP-utilizing chromatin assembly and remodeling factor 1; hACF1; CHRAC subunit ACF1; Williams syndrome transcription factor-related chromatin-remodeling factor 180; WCRF180; hWALp1
Gene Symbol	BAZ1A
Entrez Gene	11177(Human)
SwissProt	Q9NRL2(Human); O88379(Mouse)

*AREX continuously optimizes our products. Webpage content may not reflect the latest updates. For inquiries, please contact info@arexbio.com or your local distributor.

*Clone Number, Reactivity, Source/Host and Clonality can be found in the product name and Key Features section above.

DATASHEET**BAZ1A Rabbit Polyclonal Antibody**

CAT. NO. APA14926

DATA

Western blot analysis of BAZ1A expression in HeLa (A), mouse lung (B), mouse spleen (C), rat lung (D) whole cell lysates. (Predicted band size: 175; 178 kD; Observed band size: 250 kD)

STORAGE

Store at 4°C short term. For long term storage, store at -20°C, avoiding freeze/thaw cycles.

NOTE

For Research Use Only. Not for diagnostic, therapeutics, prophylactic or in vivo use.