

DATASHEET

ROBO4 Rabbit Polyclonal Antibody

CAT. NO. APA14928

KEY FEATURES

Target	ROBO4	Source / Host	Rabbit
Reactivity	Human	Clonality	Polyclonal
Applications	WB	Conjugation	Unconjugated
Form / Buffer	Liquid in 0.42% Potassium phosphate, 0.87% Sodium chloride, pH 7.3, 30% glycerol, and 0.01% sodium azide.		Storage at-20°C

BACKGROUND

Receptor for Slit proteins, at least for SLIT2, and seems to be involved in angiogenesis and vascular patterning. May mediate the inhibition of primary endothelial cell migration by Slit proteins . Involved in the maintenance of endothelial barrier organization and function .

APPLICATION

To ensure optimal assay performance, AREX recommends conducting reagent titration tailored to each testing system for optimal detection results.

WB	1:500 - 1:2000
----	----------------

*Results are sample-specific. Please refer to your local assay conditions and test parameters for reference.

PRODUCT OVERVIEW

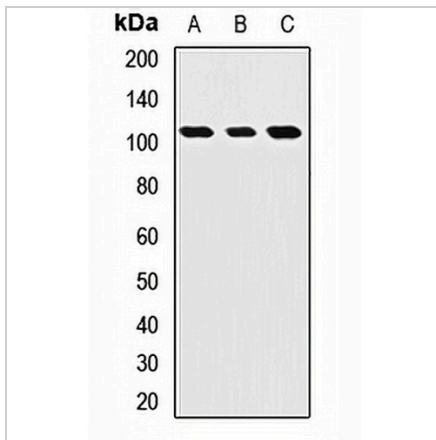
Description	Rabbit polyclonal antibody to ROBO4
Specificity	Recognizes endogenous levels of ROBO4 protein.
Antibody Type	Primary antibody
Immunogen	Recombinant fusion protein of human ROBO4
Purification	The antibody was purified by immunogen affinity chromatography.
Molecular Weight	Predicted: 75; Observed: 130 kD
Form/Buffer	Liquid in 0.42% Potassium phosphate, 0.87% Sodium chloride, pH 7.3, 30% glycerol, and 0.01% sodium azide.
Alternative Names	Roundabout homolog 4; Magic roundabout
Gene Symbol	ROBO4
Entrez Gene	54538(Human)
SwissProt	Q8WZ75(Human)

*AREX continuously optimizes our products. Webpage content may not reflect the latest updates. For inquiries, please contact info@arexbio.com or your local distributor.

*Clone Number, Reactivity, Source/Host and Clonality can be found in the product name and Key Features section above.

DATASHEET**ROBO4 Rabbit Polyclonal Antibody**

CAT. NO. APA14928

DATA

Western blot analysis of ROBO4 expression in HT29 (A), HepG2 (B), HeLa (C) whole cell lysates. (Predicted band size: 75; 98; 107 kD; Observed band size: 130 kD)

STORAGE

Store at 4°C short term. For long term storage, store at -20°C, avoiding freeze/thaw cycles.

NOTE

For Research Use Only. Not for diagnostic, therapeutics, prophylactic or in vivo use.